

“THIS IS THE BEST PROMPT EBOOK  
FOR THE MOST IMPRESSIVE IMAGES”

*-METRICSMULE.COM*

# THE EBOOK

PHOTOREALISTIC



INCLUDES  
PROMPT GENERATORS

ALSO FEATURES

# CINEMATIC

PROMPTS FOR ALL APPS

FEEL LIKE YOU'RE THERE

[YOUTUBE.COM/@METRICSMULE](https://www.youtube.com/@METRICSMULE)



## **Prompts to use with Leonardo AI, Midjourney, Adobe Firefly, DALL-E and more.**

Some apps may work better than others, but many of the prompts are interchangeable.

If you're using a Midjourney prompt to try in Leonardo AI, remove the parameters, i.e. "--style raw, --ar 16:9, etc."

# Table of CONTENTS

## 01 CINEMATIC & DOCUMENTARY

Discover the power of content creation, set goals, and embrace the digital landscape.

## 02 PROMPT GENERATORS

In this e-book, we'll cover how to build a profitable business as a content creator.

## 03 PHOTO STYLE KEYWORDS

Craft engaging content, master storytelling, and leverage various formats and platforms.

## 04 ANIMATED STYLE

Define your brand, optimize your online profiles, and increase visibility.

## 05 FUTURISTIC

Understand your audience, foster engagement, and collaborate with fellow creators.

## 06 ARTIST STYLES





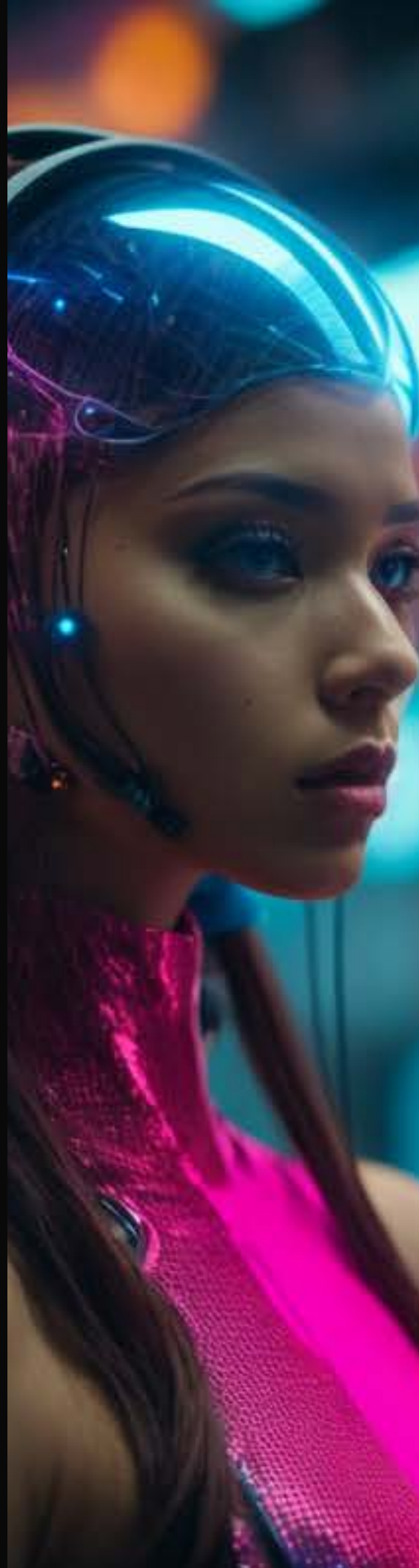
# CONTINUED

## 07 LIGHTING KEYWORDS

Discover the power of content creation, set goals, and embrace the digital landscape.

## 08 COLOR PALETTE STYLES

In this e-book, we'll cover how to build a profitable business as a content creator.



# CHAPTER



# NUMBER 1

**CINEMATIC AND DOCUMENTARY**

ALL  
APPS

LET'S  
DO IT

These ultra-realistic images make you  
feel as if you're right there in each  
cinematic scene.



EXTREME CLOSE UP, SQUIRREL, CINEMATIC STILL,  
MOVIE POSTER, HYPER REALISTIC --AR 3:2 --  
STYLE RAW



# CINEMATIC



photorealism, hyperrealism, cinematic-still, A striking street-style portrait of a rugged post-apocalyptic survivor braving the elements. Dressed in a plastic raincoat with a worn texture, they stand against a backdrop of a desolate urban environment. The rain pours down, creating a cinematic atmosphere as droplets splash against the coat's surface. Intricate details like patched repairs and buckled straps accentuate the character's resilience and resourcefulness. The scene is captured in a high-contrast black and white photography style, emphasizing the interplay of light and shadow,

**Negative Prompt:** cartoonish, smooth, texts, words, numbers, letters, signatures, watermarks, canvas, frames



# Back view Swordsmen

BACK VIEW, [SWORDMAN MALE], [MEDIEVAL CITY], [SWORDMAN CLOTHES], VIDEOGAME CHARACTER, UE5, OC RENDERING, [MORNING LIGHT], HYPER-REALISTIC, 8K --AR 16:9 --V 5.2 --STYLE RAW





# Back view Swordsmen

BACK VIEW, [SWORDMAN MALE], [MEDIEVAL CITY], [SWORDMAN CLOTHES], VIDEOGAME CHARACTER, UE5, OC RENDERING, [MORNING LIGHT], HYPER-REALISTIC, 8K --AR 16:9 --V 5.2 --STYLE RAW





# Glamour Rebel

GLAMOUR FURUTISTIC REBEL FILM POSTER, IN THE  
STYLE OF EPIC MOVEMENT, DYNAMIC COMPOSITION,  
CINEMATIC COLOR GRADING, STUNNING,  
PHOTOREALISTIC, CHAOTIC ACTION, INTENSE  
EMOTION. SHOT WITH A CANON EOS-1D X MARK III





# Glamour Pirate

GLAMOUR PIRATE FILM POSTER, IN THE STYLE OF EPIC  
MOVEMENT, DYNAMIC COMPOSITION, CINEMATIC  
COLOR GRADING, STUNNING, PHOTOREALISTIC,  
CHAOTIC ACTION, INTENSE EMOTION. SHOT WITH A  
CANON EOS-1D X MARK III





# Hawaiian Cinematic

IN THIS 16K HYPERREALISTIC IMAGE, AN HAWAIIAN PRINCESS'S REGAL FIGURE IS DRAPED IN LUXURIOUS DEEP BLUE GARMENTS, ADORNED WITH HAWAIIAN MOTIFS. HER STRAIGHT BLACK HAIR, STYLED WITH BLUE AND SILVER ORNAMENTS, FRAMES HER FACE, HIGHLIGHTING HER DEEP BROWN EYES AND STRONG NOSE. THE ELABORATE JEWELRY REFLECTS HER NOBLE LINEAGE. PHOTOGRAPHY, TAKEN WITH A NIKON Z7 II USING AN 85MM F/1.8 LENS, SET AT F/2.5, ISO 80, 1/200S, WITH AMBIENT LIGHT COMPLEMENTED BY A SOFTBOX FOR EVEN ILLUMINATION, --AR 16:9 --S 900 --V 5.2



# Photorealistic

(PHOTOREALISTIC), BEAUTIFUL LIGHTING, BEST QUALITY, REALISTIC, FULL BODY PORTRAIT, REAL PICTURE, INTRICATE DETAILS, DEPTH OF FIELD, 1GIRL, IN A COLD SNOWSTORM, A VERY MUSCULAR SOLIDER GIRL WITH HAIRCUT, WEARING WINTER CAMO MILITARY FATIGUES, CAMO PLATE CARRIER RIG, COMBAT GLOVES, (MAGAZIN POUCHES), (KNEEPADS), HIGHLY-DETAILED, PERFECT FACE, BLUE EYES, LIPS, WIDE HIPS, SMALL WAIST, TALL, MAKE UP, TACTICOOL, FUJIFILM XT3, OUTDOORS, BRIGHT DAY, BEAUTIFUL LIGHTING, RAW PHOTO, 8K UHD, FILM GRAIN, ((BOKEH))





# Black Widow

CRAFT A 8K HYPERREALISTIC, CINEMATIC IMAGE CAPTURING A CLOSE-UP OF SCARLETT JOHANSSON AS BLACK WIDOW. THE LEVEL OF DETAIL SHOULD BE IMMENSE, ALLOWING VIEWERS TO SEE THE INTENSITY IN HER EYES, THE INTRICATE TEXTURES OF HER SUIT, AND THE METICULOUS DETAILING OF HER SURROUNDINGS. THE LIGHTING SHOULD EMPHASIZE THE CONTOURS OF HER FACE, HIGHLIGHTING HER DETERMINED EXPRESSION AMIDST A CRITICAL MISSION. THIS IMAGE SHOULD EXUDE A SENSE OF URGENCY, SKILL, AND FOCUS, SYNONYMOUS WITH A STILL PULLED FROM AN INTENSE DOCUMENTARY OR A PIVOTAL MOMENT IN A HIGH-STAKES FILM SCENE. USE ENHANCED HDR TECHNIQUES TO MAKE EVERY DETAIL POP, ENSURING A PHOTOGRAPHY REALISTIC OUTCOME THAT IMMERSSES VIEWERS INTO BLACK WIDOW'S WORLD.



# Nature Photography

NATURE PHOTOGRAPHY OF A DESERT SCENE WITH A SURREAL MIRAGE EFFECT UNDER THE BLAZING SUN, HIGH NOON, CAPTURED WITH REVOLUG KOLOR. THE INTENSE LIGHT PLAY CREATES AN OTHERWORLDLY ATMOSPHERE, WARM COLOR PALETTE



# AIR JORDAN



A BREATHTAKING CLOSE-UP OF A PAIR OF 8K ULTRA REALISTIC AIR JORDAN SHOES. THE SHOES ARE METICULOUSLY CRAFTED WITH IMPECCABLE ATTENTION TO DETAIL, SHOWCASING EVERY STITCH, TEXTURE, AND LOGO WITH ASTONISHING CLARITY. THE ENVIRONMENT IS A SLEEK, MODERN SNEAKER BOUTIQUE, FILLED WITH SOFT LIGHTING THAT ELEGANTLY HIGHLIGHTS THE SHOES' INTRICATE DESIGN. THE STYLE IS A HYPER-REALISTIC DIGITAL RENDERING, USING ADVANCED RENDERING TECHNIQUES TO ACHIEVE LIFELIKE MATERIALS AND LIGHTING EFFECTS.



# AIR JORDAN





A PAIR OF ULTRA REALISTIC AIR JORDAN SHOES, METICULOUSLY CRAFTED WITH EXCEPTIONAL ATTENTION TO DETAIL. THE SHOES SHOWCASE A VIBRANT RED AND BLACK COLOR SCHEME, WITH GLOSSY PATENT LEATHER ACCENTS AND INTRICATE STITCHING PATTERNS. THE ENVIRONMENT IS A SLEEK AND MODERN SNEAKER STORE, FILLED WITH SLEEK DISPLAY CASES AND SOFT AMBIENT LIGHTING THAT HIGHLIGHTS THE EXQUISITE CRAFTSMANSHIP OF THE SHOES. THE STYLE IS A HYPERREALISTIC PAINTING, CAPTURING EVERY SUBTLE TEXTURE AND REFLECTION ON THE SHOES' SURFACE. THE ARTIST EMPLOYS OIL PAINTS AND A FINE BRUSH TO RECREATE THE INTRICATE DETAILS OF THE SHOES, EMPHASIZING THE LUSTER OF THE PATENT LEATHER AND THE VIBRANT COLORS.





# AIR JORDAN





A VISUALLY STUNNING UNDERWATER SCENE SHOWCASING 8K ULTRA REALISTIC AIR JORDAN SHOES SUBMERGED IN CRYSTAL-CLEAR TURQUOISE WATER. THE SHOES ARE SURROUNDED BY COLORFUL CORAL REEFS AND EXOTIC MARINE LIFE, CREATING A SURREAL AND SERENE ATMOSPHERE. THE ENVIRONMENT IS A TROPICAL PARADISE, WITH GOLDEN SUNLIGHT STREAMING THROUGH THE WATER'S SURFACE, CASTING A MESMERIZING GLOW ON THE SHOES. THE STYLE IS A REALISTIC DIGITAL RENDERING, UTILIZING SPECIALIZED WATER SIMULATION TECHNIQUES TO CAPTURE THE TRANSPARENCY AND LUMINOSITY OF THE UNDERWATER WORLD.



# AIR JORDAN



A BREATHTAKING CLOSE-UP OF A PAIR OF 8K ULTRA REALISTIC AIR JORDAN SHOES. THE SHOES ARE METICULOUSLY CRAFTED WITH IMPECCABLE ATTENTION TO DETAIL, SHOWCASING EVERY STITCH, TEXTURE, AND LOGO WITH ASTONISHING CLARITY. THE ENVIRONMENT IS A SLEEK, MODERN SNEAKER BOUTIQUE, FILLED WITH SOFT LIGHTING THAT ELEGANTLY HIGHLIGHTS THE SHOES' INTRICATE DESIGN. THE STYLE IS A HYPER-REALISTIC DIGITAL RENDERING, USING ADVANCED RENDERING TECHNIQUES TO ACHIEVE LIFELIKE MATERIALS AND LIGHTING EFFECTS.







**A NIKE SHOE, FUTURISTIC LOOK, PRODUCT PHOTOGRAPHY SHOT WITH A CANON EF 50MM F/1.8 STM LENS, CINEMATIC LIGHTING, ELABORATE DETAILS, 8K RESOLUTION, MAGENTA, BLACK, WHITE COLORS, NIKE SHOE --AR 3:2**



**Replace [Nike] with other brands, too.**



**KIRLIAN EFFECT, AN ELECTROMAGNETIC FIELD AROUND A NIKE SHOE, CAPTURED BY A FUJIFILM GFX 50R, VIBRANT ILLUSTRATIONS, 32K UHD, SUBTLE GRADIENTS, FAIRY TALE ILLUSTRATIONS, BOKEH, DREAMY GLOW, ETHEREAL LIGHTING**



**Replace  
[Nike]  
with other  
brands,  
too.**

# SUPERSHOE CUSTOM GPT



**LINK: <https://chat.openai.com/g/g-ISbDE09on-super-shoe-designer>**







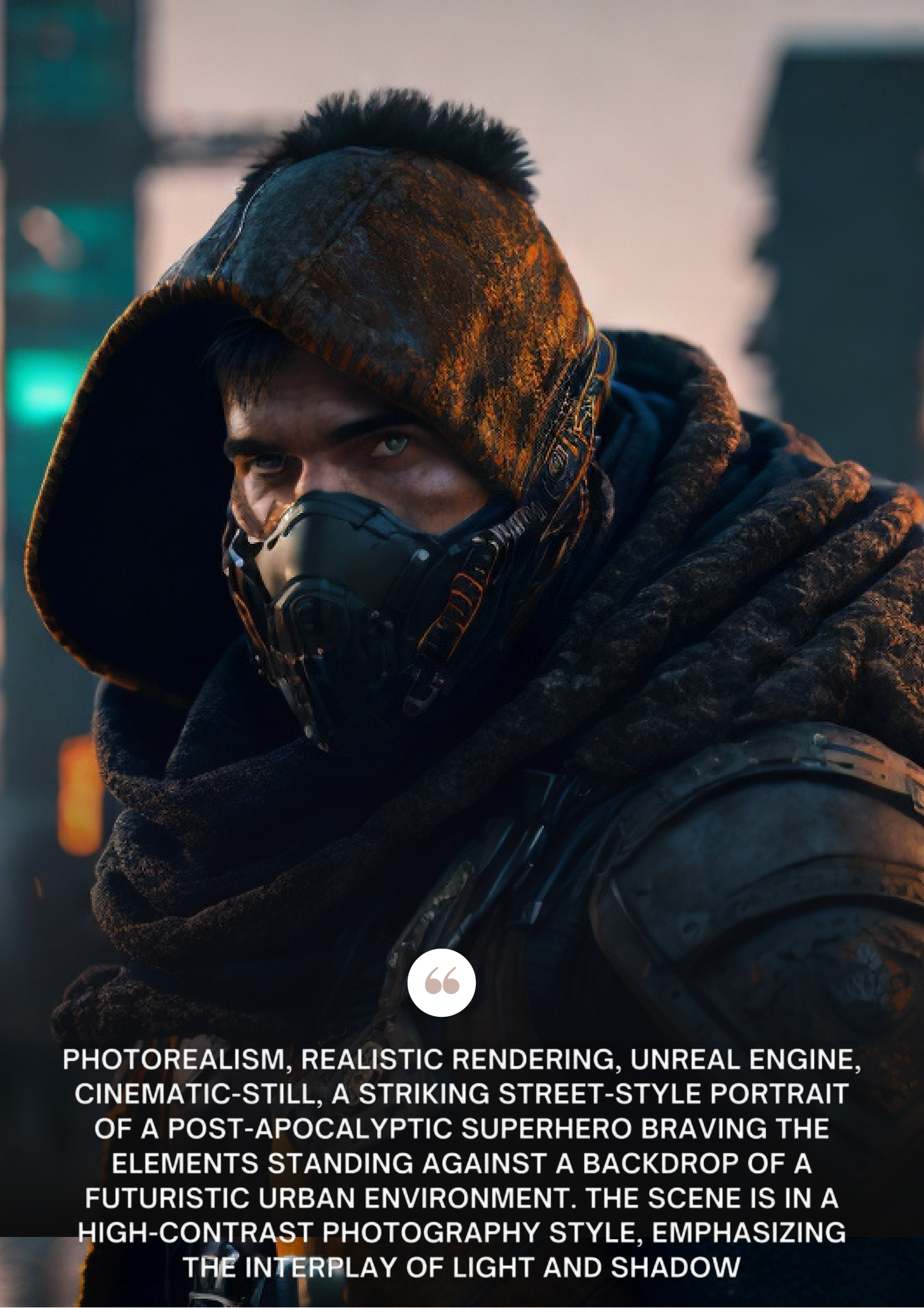
# DYSTOPIA

## PROMPT BELOW

CINEMATIC SHOT , [MAN] WEARING A [MILITARY CLOTHES] POST-APOCALYPTIC [ LOS ANGELES CITY ], THE STREETS AND BUILDINGS ARE FULL OF VEGETATION, BACK ANGLE, TAKED BY IMAX 65MM CAMERA, SUNNY DAY, HYPER-DETAILED --AR 21:9 --  
STYLE RAW







PHOTOREALISM, REALISTIC RENDERING, UNREAL ENGINE, CINEMATIC-STILL, A STRIKING STREET-STYLE PORTRAIT OF A POST-APOCALYPTIC SUPERHERO BRAVING THE ELEMENTS STANDING AGAINST A BACKDROP OF A FUTURISTIC URBAN ENVIRONMENT. THE SCENE IS IN A HIGH-CONTRAST PHOTOGRAPHY STYLE, EMPHASIZING THE INTERPLAY OF LIGHT AND SHADOW







**A WOMAN WITH LONG BLONDE HAIR STANDING IN FRONT  
OF A FIERY DRAGON, IN THE STYLE OF 8K RESOLUTION,  
BURNED/CHARRED, POP CULTURE REFERENCES, RTX ON,  
UHD IMAGE, SILVER AND BROWN, CLOSE-UP**





**A CINEMATIC SCENE FROM DRAMA TV SHOW, "GAME OF THRONES",  
CLOSE-UP SHOT, A CHARISMATIC EMILIA CLARKE WITH BLEACH  
BLONDE HAIR SITS ON TOPS OF A POWERFUL DRAGON WITH THE  
DRAGON BLOWING OUR POWERFUL, LUMINESCENT FLAMES FROM ITS  
MOUTH CAPTURED BY UHD CANON EOS R6 MARK II CAMERA,  
COMPLEMENTED BY THE SIGMA 50MM F/1.4 DG HSM ART LENS,  
ENSURING EVERY DETAIL, INSPIRING, NATURAL LIGHT**





**POLAR PANORAMA PHOTOGRAPHY, A FIERCE BATTLE BETWEEN  
KNIGHTS IN A MEDIEVAL FORTRESS, WITH FLAMES FROM TORCHES  
REACHING THE NIGHT SKY, FISH-EYE LENS, CENTER FOCUS, BLINDING  
LIGHT FROM CLASHING STEEL AND FIRE, NIGHT WITH TORCH FLAMES,  
SHOT WITH CANON EOS 5D MARK IV, MEDIEVAL FURY**

## COOL SCENES



### PIRATES, HERO SHOT

pirates playing at Venice | top view  
National Geographic award winning  
GoPro Hero shot --style raw



### MINIONS, HERO SHOT

minions playing at Moscow | top  
view National Geographic award  
winning GoPro Hero shot --style raw



### RPG PIRATE COVE

isometric pirate cove, RPG scene,  
unreal engine, dark background --  
style rawPro Hero shot --style raw





## AWESOME CHARACTERS



### **SUPERMAN**

A photorealistic portrayal of Superman, muscular superhero with sharp eyes and a determined look. He is dressed in a fusion of black and red, futuristic attire in a dystopian city with vibrant light streaming in.



### **SUPERMAN**

a superman stands on city streets at night, in the style of strong facial expression, colorized, celebrity-portraits, uhd image, thomas sully, close-up, mono-ha



### **GAME OF THRONES, JON SNOW**

Jon Snow character from the HBO TV series Game of Thrones, male, ranger, holding golden sword, wearing dark leather, fantasy style, standing in a forest, perfect proportion, dungeons and dragons style, 8K picture quality, shimmer, delicate picture, full body shot, character sheet, 3d, cgi







---

## Photos in the wild

AN CINEMATIC EXTREME CLOSEUP SHOT OF A WOMAN AND HER MAJESTIC PET TIGER FACING EACH OTHER, HEADS TOUCHING, INTIMATE CLOSEUP, IN A RAINFOREST, HIGHLY DETAILED, PHOTOREALISTIC, EXTREME QUALITY, BRIGHT SUNLIGHT --AR 16:9

---





GRITTY AND EDGY



BATMAN

01

**A GRITTY AND EDGY  
VERSION OF BATMAN,  
DRESSED IN ALL BLACK,  
PROWLs THE STREETS OF  
A DYSTOPIAN CITY, HIS  
PIERCING GAZE AND  
POWERFUL STANCE A  
SYMBOL OF HOPE FOR THE  
OPPRESSED CITIZENS.**



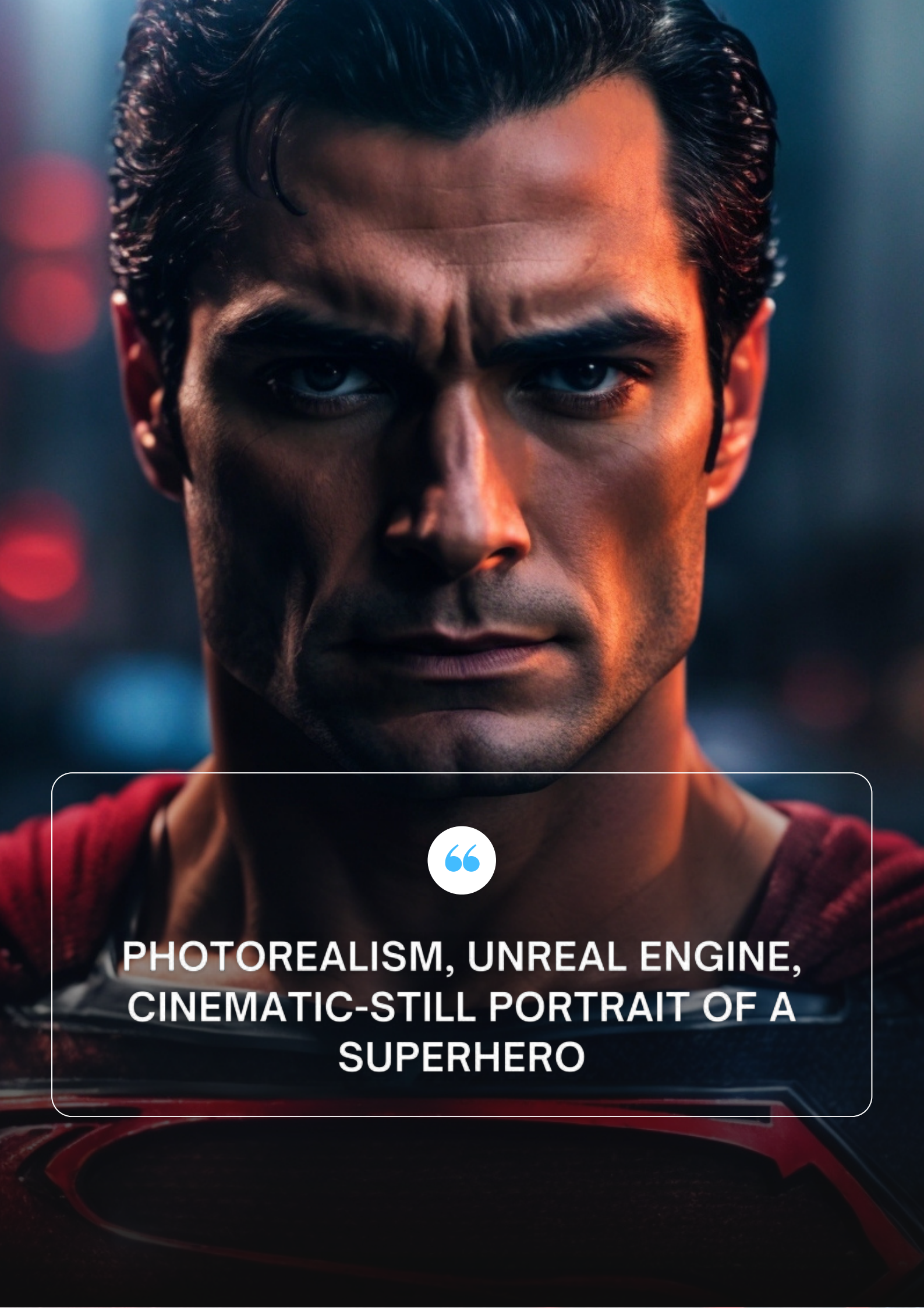




## MODERN BATMAN

A sleek and modern Batman superhero, clad in all black, stands atop a towering skyscraper, his cape billowing in the wind as he surveys the city below.





**PHOTOREALISM, UNREAL ENGINE,  
CINEMATIC-STILL PORTRAIT OF A  
SUPERHERO**





CLOSEUP PHOTOREALISTIC,  
DOCUMENTARY STYLE SHOT OF A  
SUPERHERO LOOKING DIRECTLY INTO  
THE CAMERA, DYSTOPIAN WORLD







**ILLUSTRATE HULOPOE BEACH IN LANAI AS VIEWED FROM THE PORCH OF THE FOUR SEASONS RESORT. ENSURE REALISTIC RENDERING OF FRIENDLY SPINNER DOLPHINS LEAPING IN THE WATERS, JUXTAPOSED AGAINST THE GOLDEN HUES OF THE BEACH'S SANDS.**





Scenery

## Tropical Landscape

Render a high-quality UHD 8K image of Hanalei Bay, backed by majestic 4,000-foot emerald mountains. Infuse the shot with intricately detailed surfers riding the winter waves, capturing the true spirit of Kauai's northern shore.







**CRAFT A HYPERREALISTIC REPRESENTATION OF WAIKIKI BEACH, FOCUSING ON THE GOLDEN SANDS WITH THE BACKDROP OF THE ICONIC ROYAL HAWAIIAN HOTEL. ENSURE A CINEMATIC ATMOSPHERE, CAPTURING THE MINGLING OF LOCALS AND TOURISTS.**



**A FUTURISTIC BEACHSCAPE WITH A VIBRANT BLUE SKY, LUSH PALM TREES, AND A CRYSTAL CLEAR OCEAN.**





**GENERATE A PHOTOREALISTIC CINEMATIC IMAGE CAPTURING THE SERENE BEAUTY OF LARGE, SNOWCAPPED MOUNTAINS DURING THE BLUE HOUR IN UTAH, WITH A TRANQUIL LAKE IN THE BACKGROUND**





**A CLOSE-UP OF PARIS  
LANDSCAPE, SHROUDED  
IN MIST, USE A FUJIFILM  
X-T4, JIMMY CHIN'S  
OUTDOOR PHOTOGRAPHY  
STYLE --AR 16:9 --S 750**



**AN OLD-FASHIONED DOCK AT TWILIGHT IN A ROMANTIC, VINTAGE  
SETTING WITH AQUATIC ELEMENTS, CAPTURING THE MOOD OF THE  
SHAPE OF WATER, FEATURING TWILIGHT PURPLEJIFILM X-T4,  
JIMMY CHIN'S OUTDOOR PHOTOGRAPHY STYLE --AR 16:9 --S 750**





CINEMATIC

# THE STATIC SHOT

**THE STATIC SHOT: CLOSE UP SHOT, IN A  
BARREN AND MUTE ASHEN WORLD, A LONE  
SURVIVOR COMMUNICATES WITH THE  
DISTANT CREATURES USING AN  
FUTURISTIC DEVICES, 8K, HIGHLY DETAILED  
--STYLE RAW --AR 21:9 --V 5.2**



Best in Midjourney and Leonardo AI



A close-up photograph of a hippopotamus in water, with its head and ears visible. The hippo's skin is dark and wrinkled. The background is a soft, out-of-focus landscape with water and distant land under a pale sky. A semi-transparent white rectangular box is centered over the hippo's face, containing text.

II

**documentary  
photography, hippo,  
captivating  
moments, award  
winning  
photography, shot  
on Agfa, taken with  
Hasselblad --ar 4:5**

-

Documentary





A full-body shot of Jon Snow from the HBO TV series Game of Thrones. He is standing in a dark, misty forest, looking directly at the camera with a serious expression. He is wearing his iconic Night's Watch armor, which includes a dark leather tunic with intricate metal plates on the chest and shoulders, and a thick fur collar. He is holding a sword with a golden hilt in his right hand. The lighting is dramatic, highlighting the texture of his armor and the fur collar.

# JON SNOW

JON SNOW CHARACTER FROM THE HBO TV SERIES GAME OF THRONES, MALE, RANGER, HOLDING GOLDEN SWORD, WEARING DARK LEATHER, FANTASY STYLE, STANDING IN A FOREST, PERFECT PROPORTION, DUNGEONS AND DRAGONS STYLE, 8K PICTURE QUALITY, SHIMMER, DELICATE PICTURE, FULL BODY SHOT, CHARACTER SHEET, 3D, CGI



A CINEMATIC SCENE FROM DRAMA MOVIE "THE HUNGER GAMES", CLOSE-UP SHOT, A CHARISMATIC KATNISS EVERDEEN PLAYED BY ACTRESS JENNIFER LAWRENCE WITH BRAIDED BROWN HAIR, HOLDING A BOW AND ARROW WITH A POWERFUL FLAME ILLUMINATED ON THE TIP OF AN ARROW, CAPTURED BY UHD CANON EOS R6 MARK II CAMERA, COMPLEMENTED BY THE SIGMA 50MM F/1.4 DG HSM ART LENS, ENSURING EVERY DETAIL, INSPIRING, NATURAL LIGHT





**STUNNING INSTAGRAM MODEL, WOMAN, BRUNETTE HAIR, THE PHOTOGRAPHER CAPTURED THIS STUNNING IMAGE WITH A WIDE-OPEN APERTURE, CREATING A SHALLOW DEPTH OF FIELD THAT BEAUTIFULLY BLURS THE BACKGROUND. THE SOFT FOCUS DRAWS ATTENTION TO THE MODEL'S CAPTIVATING FEATURES. THE ISO RATING WAS KEPT LOW TO MAINTAIN IMAGE QUALITY, AND A FAST SHUTTER SPEED WAS USED TO FREEZE ANY SUBTLE MOVEMENTS. GOLDEN HOUR SUNLIGHT BATHES THE MODEL IN A WARM, FLATTERING GLOW, CASTING GENTLE SHADOWS THAT ACCENTUATE HER CURVES AND FEATURES. THE SOFT, DIFFUSED LIGHT ENHANCES THE OVERALL ALLURE OF THE SCENE.**



**A CINEMATIC SCENE FROM THE MARVEL COMICS SERIES, BLACK WIDOW CHARACTER  
PLAYED BY SCARLETT JOHANSSON, CLOSE-UP SHOT, A CHARISMATIC SCARLETT  
JOHANSSON WITH BLEACH BLONDE HAIR, CAPTURED BY UHD CANON EOS R6 MARK II  
CAMERA, COMPLEMENTED BY THE SIGMA 50MM F/1.4 DG HSM ART LENS, ENSURING  
EVERY DETAIL, INSPIRING, NATURAL LIGHT**





**A CINEMATIC SCENE FROM 2023, DRAMA, "DUNE", CLOSE-UP SHOT, A DETERMINED WOMAN PUSHING AGAINST A MASSIVE STONE OBSTACLE CAPTURED BY HANDHELD CAMERA, FILM DIRECTED BY GRETA GERWIG, INSPIRING, NATURAL LIGHT --AR 21:9 --STYLE RAW**





**A DOCUMENTARY-STYLE PHOTOGRAPH SHOWCASING A YOUNG, ATTRACTIVE WOMAN WITH BRUNETTE HAIR AND BLUE EYES IN A DYSTOPIAN WORLD. SHE IS DRESSED IN FUTURISTIC CLOTHING, AMIDST A BACKDROP OF FUTURISTIC, RUINED BUILDINGS. THE SETTING IS DURING THE 'BLUE HOUR,' ADDING A MOODY AND EVOCATIVE ATMOSPHERE. THE WOMAN IS GAZING INTO THE DISTANCE, EMBODYING A SENSE OF CONTEMPLATION OR ANTICIPATION**



A woman of beauty,  
instagram model,  
perfect body, long  
straight blonde hair,  
blue eyes, exotic,  
8K, masterpiece,  
flushed cheeks, full  
lips, mischievous  
gaze, light brown  
skin, short black  
dress, sexy build









**A WOMAN OF  
BEAUTY, FITNESS  
MODEL, PERFECT  
BODY, LONG  
STRAIGHT BLONDE  
HAIR, BLUE EYES,  
EXOTIC, 8K,  
MASTERPIECE,  
FLUSHED CHEEKS,  
FULL LIPS,  
MISCHIEVOUS GAZE,  
LIGHT BROWN SKIN,  
SHORT BLACK DRESS,  
SEXY BUILD**



# SERENE BEACH SCENE, YOUNG WOMAN

Capture the allure of a serene beachscape with a photorealistic portrayal of a captivating woman at the shore. The camera lens of choice is the Canon EOS R6 Mark II, complemented by the Sigma 50mm f/1.4 DG HSM Art Lens, ensuring every detail of the woman's radiance is exquisitely captured. The scene unfolds in a medium shot, showcasing the beauty of her sun-kissed features and the gentle waves lapping at the sandy shore. The resolution set to 4K allows her vibrant swimsuit and the glimmering ocean to stand out in mesmerizing clarity. The HDR lighting accentuates her sunlit glow, giving her an ethereal presence amidst the coastal ambiance. Unreal Engine 5 enhances the entire composition, bringing a cinematic quality to this photorealistic masterpiece. Her gaze captures a sense of tranquility, resonating with the peaceful seascape behind her. The panoramic view of the beach and distant horizon adds a touch of wanderlust to the scene, inviting viewers to bask in the beauty of both nature





## RADIANT WOMAN

A stunningly radiant blonde woman, her golden locks cascade down her shoulders, exuding an air of effortless elegance. This captivating portrait, possibly a photograph, captures her in a mesmerizing Synthwave setting, evoking a vibrant fusion of retro-futuristic aesthetics. The high-quality image showcases her flawless complexion, highlighting her bright and piercing eyes that shimmer with an iridescent allure. Every minute detail, from the delicate contours of her face to the vibrant hues of her makeup and clothing, seamlessly adds to the overall allure of this enchanting image.

## PHOTOREALISTIC SETTING

a woman is walking on the stones near a lake, in the style of unreal engine 5, exquisite clothing detail, chuah thean teng, fernand toussaint, exotic, villagecore, slumped/draped --ar [] --style raw --s [250]





## VIBRANT WOMAN

Generate a vibrant and highly detailed AI image of a modern woman at the beach. Render her in a photorealistic style, capturing the fine details of her features, clothing, and surroundings. The woman should exude confidence and style, with a contemporary fashion sense suitable for a beach setting. Pay close attention to realistic skin tones, textures, and lighting conditions, emphasizing the play of sunlight on her skin. Ensure the image is in high resolution, such as 8K, to showcase the intricate details and allow for zooming capabilities. Utilize advanced rendering techniques to create a lifelike beach environment, complete with sparkling water, sandy shores, and realistic waves. Consider incorporating additional elements like beach umbrellas, sun loungers, or palm trees to enhance the overall composition and add visual interest

## SERENE MOMENT

Capture a serene moment at the beach with a Nikon D850 and a Sigma 50mm f/1.4 lens. Focus on a modern woman enjoying the coastal breeze in a medium shot. Use golden hour lighting for warmth and photorealistic details. Highlight her joyful expression and the ocean's reflections in her eyes. Keep the image sharp and well-defined, avoiding blurriness and unrealistic features. Maintain a high resolution (4K or 8K) for hyper-detailed realism. Create a tranquil and realistic scene."





INTERCHANGEALB WITH ANY APP

# PHOTOREAL PEOPLE



## SERENE FACES

Beautiful [woman with red hair] and sparks behind his, in the style of Alessio Albi, bokeh, light white and dark orange, dotted, uhd image, serene faces



## FANTASY FILM SCENE

Striking snapshot, fantasy film scene, [mix of traditional and future-oriented clothing], [photography amplifying the fusion of styles], vivid, dreamy color palette :: encapsulating the visual drama of action comics :: captured with [Lucky SHD 100] --v 5.2 --style raw --ar 21:9



## DYSTOPIAN DOCUMENTARY

Extremely photorealistic, cinematic image of a very attractive young woman lost in a desolate dessert, dystopian, documentary style, 8K, hyper detailed

INTERCHANGEABLE WITH ANY APP

# PHOTOREAL PEOPLE



## ATTRACTIVE

Photo of an attractive woman, raw, long blonde hair, ultra realistic portrait, perfect detailed face, detailed symmetric blue eyes, realistic, stunning photograph, octane render, at the pool, photographed with a Canon EOS R5, 50mm Lens, F/2.8, 8K, cinematic lighting.



## WINDOW GLARES

Photo of blonde young woman, through an outdoor window, glares and reflections, portrait, kodak ektar 100, street photography



INTERCHANGEALB WITH ANY APP

# PHOTOREAL



## BABY ELEPHANT

Cute baby {elephant} with sunlight glow, realistic rendering, unreal engine 5 --ar 16:9



## HOT WHEELS TRUCK

Hot-Wheels truck model | childhood epic race | in-game experience | RTX-on, Unreal engine | sports shot --style raw --ar 16:9 --s 750



## TRANSPARENT SPHERES

Four transparent spheres arranged in a square, each containing a different 3D realistic element related to [Your theme/ object/ environment]. Realistic textures and colors. The spheres are set against a white background to enhance their visibility.

INTERCHANGEALB WITH ANY APP

# PHOTOREAL OBJECTS



## EXTREME CLOSEUP

a close up of a dew drop on a leaf, extremely detailed, extreme minimalism, empty space.

## SAMPLER CHART

craft beer sampler chart --ar 5:1BB



## FRUIT SPLASH

[Fruit] color splash, black background, in the style of fluid photography, spectacular backdrops, vray, environmental awareness, duckcore, digital art wonders, award-winning





IN A CAPTIVATING BEACH SETTING, A MEDIUM CLOSE-UP PHOTO CAPTURES THE ALLURE OF AN INCREDIBLY BEAUTIFUL FITNESS GIRL. SHE STANDS WITH FLOWING BLOND HAIR, ADORNED WITH DELICATE VINES, BASKING IN THE SUN'S RADIANT GLOW. THE SCENE IS VIVID AND RICH, PRESENTED IN 8K RESOLUTION FOR OPTIMAL QUALITY. HER CAPTIVATING CHARM IS ACCENTUATED BY SHEER WHITE NIGHTWEAR THAT TASTEFULLY HINTS AT HER FEATURES. THE IMAGE IS A MASTERPIECE THAT PLAYS WITH LIGHT AND SHADOW, ACHIEVING STRIKING CONTRAST AND DEPTH OF FIELD. THE ATTENTION TO DETAIL EXTENDS TO HER FACE, REFLECTING LIFELIKE NUANCES IN THE STYLE REMINISCENT OF SAMDOESARTS. THIS ARRESTING IMAGE CELEBRATES NATURAL BEAUTY AND ALLURE, ENCAPSULATING THE ESSENCE OF AN ENCHANTING MOMENT AMID THE LUSH JUNGLE. A BREATHTAKING UNCENSORED PORTRAYAL OF A CAPTIVATING WOMAN IN AN INTIMATE SOLO SCENE. SHE POSSESSES REMARKABLE BEAUTY, WITH FLAWLESS FEATURES AND AURA. HER HAIR, WHITE AND STYLED IN A PONYTAIL WITH COLORED TIPS AND INNER HAIR



Extremely detailed illustration of gorgeous woman, Taylor Swift, wearing haute couture, stylish, backlit, highly illuminated, colorful crystal, awesome hair, closeup, visually rich, raytraced, manga, whimsical, JRPG, enchanting, emotionally evocative, detailed environment, fantastical, imaginative, visually rich, atmospheric, zoomed, flat lighting, 2d, cartoon, vector, rocks, art by MSchiffer

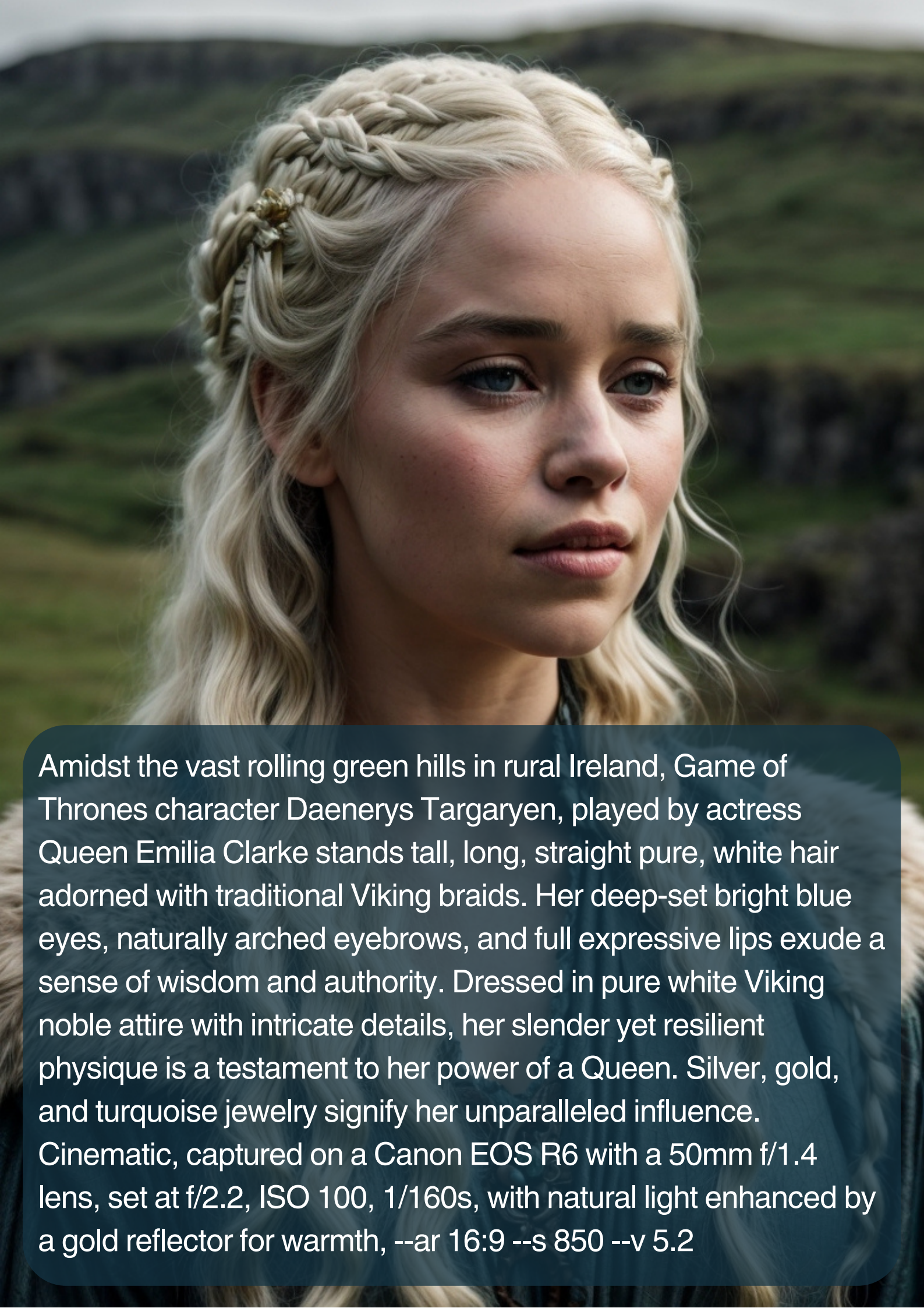






extremely detailed illustration of gorgeous woman wearing haute couture, (Beyonce lookalike) stylish, backlit, highly illuminated, colorful crystal, awesome hair, closeup, visually rich, raytraced, manga, whimsical, JRPG, enchanting, emotionally evocative, detailed environment, fantastical, imaginative, visually rich, atmospheric, zoomed, flat lighting, 2d, cartoon, vector, rocks, art by MSchiffer





Amidst the vast rolling green hills in rural Ireland, Game of Thrones character Daenerys Targaryen, played by actress Queen Emilia Clarke stands tall, long, straight pure, white hair adorned with traditional Viking braids. Her deep-set bright blue eyes, naturally arched eyebrows, and full expressive lips exude a sense of wisdom and authority. Dressed in pure white Viking noble attire with intricate details, her slender yet resilient physique is a testament to her power of a Queen. Silver, gold, and turquoise jewelry signify her unparalleled influence. Cinematic, captured on a Canon EOS R6 with a 50mm f/1.4 lens, set at f/2.2, ISO 100, 1/160s, with natural light enhanced by a gold reflector for warmth, --ar 16:9 --s 850 --v 5.2





A Cinematic Scene from Drama TV show, "Game of Thrones", Close-up shot, A charismatic Emilia Clarke with bleach blonde hair sits on tops of a powerful dragon with the dragon blowing out powerful, luminescent flames from its mouth captured by UHD Canon EOS R6 Mark II camera, complemented by the Sigma 50mm f/1.4 DG HSM Art Lens, ensuring every detail, Inspiring, Natural light





PHOTOREALISTIC

# BLACK WIDOW

BLACK WIDOW CHARACTER PLAYED BY SCARLETT JOHANSSON FROM THE MARVEL COMICS SERIES FOR THE MOVIE BLACK WIDOW, FEMALE, WEARING ALL BLACK, HOLDING GOLDEN SWORD, WEARING DARK LEATHER, FANTASY STYLE, STANDING IN A DESERT, PERFECT PROPORTION, 8K PICTURE QUALITY, SHIMMER, DELICATE PICTURE, FULL BODY SHOT, CHARACTER SHEET, 3D, CGI





# Panorama

PHOTOGRAPHY

POLAR PANORAMA PHOTOGRAPHY, A BUSTLING METROPOLIS, WITH A CENTRAL PARK ACTING AS THE LUNGS, BENDING INTO URBAN HUSTLE, FISH-EYE LENS, CENTER FOCUS, BLINDING LIGHT FROM TOWERING SKYSCRAPERS, OVERCAST MIDDAY, SHOT WITH FUJIFILM GFX 50R, URBAN OASIS



# Cinematic

SCENE

CINEMATIC SHOT, AN INTENSE MOTORCYCLE NIGHT RACE, UNDER CITY NEON LIGHTS, REBELLIOUS, DUSTY::1, SHOOTING WITH LOW-LIGHT CAPABLE ARRI ALEXA CAMERA ON KODAK VISION3 FILM TO CAPTURE COLOR VIBRANCY, ENHANCED WITH FOG AND SMOKY ATMOSPHERE FOR ADDITIONAL TENSION --STYLE RAW -  
-V 5.2 --AR 21:9 --C 10





# Cosmic

SCENE

A REGAL COSMIC PROCESSION IN CELESTIAL BAROQUE  
STYLE, WITH VELVET PURPLE AND GOLD ORNATE DETAILS SET  
AGAINST A COSMIC BACKDROP --STYLE RAW --AR 3:2



# Phone

PHOTO REFLECTION

"[YOUR SUBJECT] HOLDING IPHONE IN HIS HAND WHILE  
POSING WITH A PHOTO OF HIMSELF ON THE  
SMARTPHONE SCREEN , PENTAX 645N, ASSOCIATED  
PRESS PHOTO, EYE-CATCHING, PHOTOGRAPHIC  
SOURCE, RUBENS, PLAYFUL, YOUTHFUL IMAGES"





# Closeup

DOCUMENTARY

CLOSE UP DOCUMENTARY PHOTOGRAPHY, WOMAN, IN  
THE STYLE OF CANDID, IMPERFECTION, NO MAKEUP,  
NIGHT LIGHT, LIGHT-FOCUSED, AMATEUR SHOT, SHOT  
ON AGFA, TAKEN WITH HASSELBLAD --AR 4:5 --C 20



# CINEMATIC

DOCUMENTARY

IN A CINEMATIC DOCUMENTARY SCENE, CAPTURE THE HEART-WRENCHING IMAGE OF AN ATTRACTIVE WOMAN WITH A SINGLE TEAR GRACEFULLY ROLLING DOWN HER CHEEK. THE HIGH-RESOLUTION RENDERING EMPHASIZES THE RAW EMOTION AND PHOTOREALISTIC DETAILS, MAKING THE VIEWER FEEL HER POIGNANT MOMENT





# CLOSEUP

DOCUMENTARY

CLOSE UP DOCUMENTARY PHOTOGRAPHY, ATTRACTIVE  
YOUNG WOMAN, IN THE STYLE OF CANDID, IMPERFECTION,  
NO MAKEUP, NIGHT LIGHT, LIGHT-FOCUSED, AMATEUR  
SHOT, SHOT ON AGFA, TAKEN WITH HASSELBLAD



# Establishing

SHOT

ESTABLISHING SHOT: INSIDE LATE-NIGHT JAZZ CLUB  
FILLED WITH SMOKE AND SOFT SAXOPHONE TUNES,  
OFFERING A VINTAGE 1950S VIBE, VIEWED THROUGH A  
FOGGY MAMIYA RB67 PAIRED WITH KODAK  
EKTACHROME FILM --STYLE RAW --AR 21:9



# MOVIE SCENE

A vibrant beach scene featuring Margot Robbie as Barbie. She is seated in a bright pink 1957 Corvette convertible, wearing a matching pink halter-neck dress and large, stylish pink sunglasses. Her blonde hair is styled in classic 1950s waves. She is smiling warmly at the camera. The background is a sunny beach with other people, pink umbrellas, and a clear blue sky. The overall aesthetic is bright, colorful, and nostalgic.

Comedic beach scene from "Barbie" (2023) directed by Greta Gerwig. The shot opens with a zoomed-out view of a picturesque beach, capturing the vibrant and playful world of Margot Robbie, , lounges in a pink 1957 Corvette under the warm sunlight. The UHD camera captures every detail of this hilarious moment, highlighting the colors and textures. With Gerwig's expert direction, this scene exudes comedy and invites the audience to immerse themselves in Barbie's delightful world.







INTERCHANGEABLE WITH ANY APP

# SUPERCAR



## MCLAREN 750S

Imagine the McLaren 750S as the embodiment of speed and luxury. Translate the car's raw power, the roar of its twin-turbocharged V8 engine, and its sleek carbon fiber design into colors, shapes, and abstract forms. Picture the car not just as a vehicle but as a moving piece of art on an expansive, hyperrealistic canvas, where speed has color, and torque has texture.





# McLaren

750S

CRAFT A WORLD WHERE THE MCLAREN 750S'S TOP SPEED ISN'T JUST A NUMBER, BUT AN ENTIRE REALM. SURROUND THE SUPERCAR WITH ENVIRONMENTS THAT MORPH AS WE GO FROM 0 TO 206 MPH. AT THE START, VISUALIZE A MODERN CITY. AS SPEED INCREASES, THE CITY BLURS INTO A FUTURISTIC METROPOLIS, THEN AN OTHERWORLDLY TRACK SURROUNDED BY COSMIC PHENOMENA, WITH GALAXIES, SHOOTING STARS, AND SURREAL LANDSCAPES.







## **SPACE PIRATE LEADER**

Space pirate leader, female, 30 years old, character, standing in the black cabin of a spaceship, sci-fi, cinematic, cannon 6d, octane render, medium shot, black leather jackets, cargo pants, boots, tough, resilient, determined, strong-willed, fierce, loyal, skilled, belter, resourceful, dark-haired, intense, piercing eyes, muscular, no-nonsense, pragmatic, tattooed, weathered, commanding, authoritative, intimidating, unyielding, confident, striking, intense, angular, expressive look, fierce look, alluring look, determined look, strong eyeliner, mesmerizing eyes, defined cheekbones, sculpted jawline, elegant, graceful, natural beauty, magnetic, charismatic, versatile, photogenic



A GRIPPING PROMPT THAT WILL LEAVE  
YOU ON THE EDGE OF YOUR SEAT.

# DYSTOPIA

## WORLD

PROMPT BELOW

CINEMATIC SHOT , [MAN] WEARING A [WINTER CLOTHES] , POST-APOCALYPTIC [ SAN FRANCISCO CITY], FROZEN, BACK ANGLE, TAKED BY IMAX 65MM CAMERA,[CLOUDY], MUTED COLORS GRADING, HYPER-DETAILED --AR 21:9 --STYLE RAW








LOST ON AN ICY SHORE

# ASTRONAUT

**WIDE ANGLE MINIMALIST PHOTO OF AN  
ASTRONAUT IN AN ICY SHORE, IN A STYLE OF  
MOVIE STILL, EUPHORIA, TEAL GREY AND WARM,  
MUTED TONES: MARS, OCEAN, DARK TEAL GREY  
AND WARM, MUTED TONES**

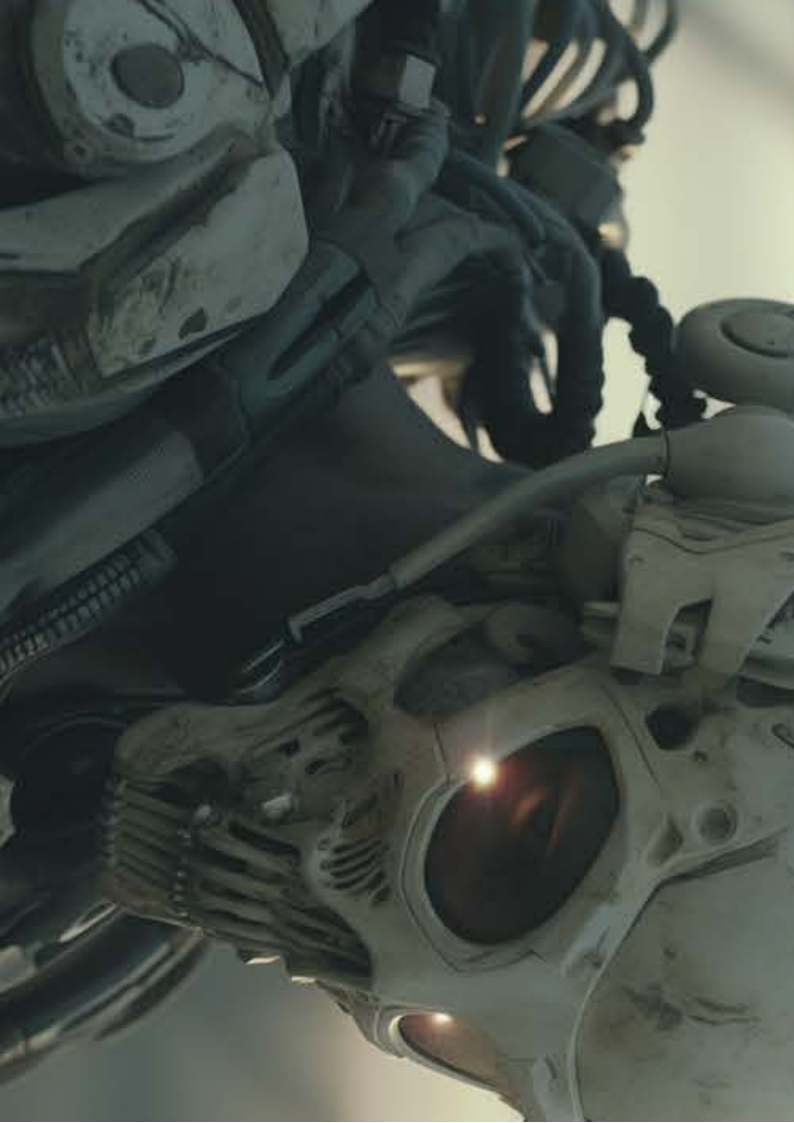
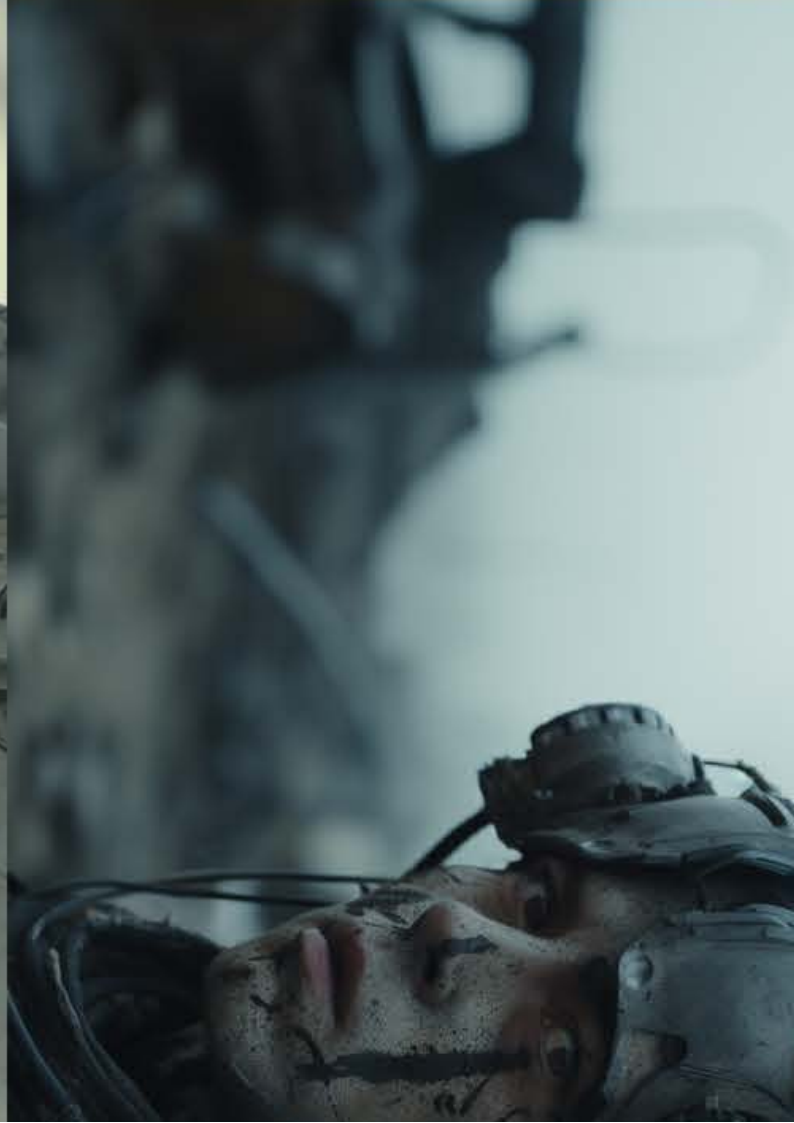


VAST

# UNKNOWN

**IN THE VAST EXPANSE OF UNKNOWN SPACE, A LONE ASTRONAUT FLOATS AIMLESSLY, THEIR SPACE SUIT SPARKLING BENEATH THE ETHEREAL GLOW OF FARAWAY STARS NESTLED WITHIN THE BOUNDLESS COSMIC VOID. THE ASTRONAUT, COMPLETELY ALONE AND DISCONNECTED FROM THE WORLD THEY ONCE KNEW, APPEARS IN THIS MESMERIZING PHOTOGRAPH. THE DETAILS OF THEIR SUIT ARE FLAWLESSLY CAPTURED, WITH EACH RIVET AND SEAM IMMACULATELY PRESENTED. THE IMAGE TRANSPORTS THE VIEWER INTO THIS IMMERSIVE SCENE, EVOKING A SENSE OF AWE AND WONDER AT THE SHEER MAGNITUDE OF THE UNIVERSE AND THE INSIGNIFICANCE OF MANKIND IN ITS VASTNESS.**







**WIDE ANGLE MINIMALIST PHOTO OF AN  
ASTRONAUT IN AN ICY SHORE, IN A STYLE OF  
MOVIE STILL, EUPHORIA, TEAL GREY AND WARM,  
MUTED TONES:: MARS, OCEAN, DARK TEAL GREY  
AND WARM, MUTED TONES --AR 21:9**



# CHAPTER



# NUMBER 2



These are **PROMPTS** that generate **PROMPTS**. Many of them are interchangeable. For example: If a prompt generator says it's for Leonardo AI, you can still use those generated prompts in other AI apps like Midjourney, DALL-E, etc.



# EXPLORE THE

PROMPT GENERATORS





THESE ARE PROMPTS THAT GENERATE PROMPTS

**PROMPT GENERATORS ARE  
ESSENTIALLY PROMPT  
ENGINEERS. WHEN YOU COME  
ACROSS A PROMPT GENERATOR,  
COPY/PASTE IT INTO CHATGPT  
FOR SOME AMAZING RESULTS.  
YOU WILL BE TURNING CHATGPT  
INTO A PROMPT ENGINEERING  
MACHINE.**

**PROMPT  
GENERATORS**

"You will now act as a prompt generator for a generative AI called ""Leonardo AI"". Leonardo AI generates images based on given prompts. I will provide you basic information required to make a Stable Diffusion prompt, You will never alter the structure in any way and obey the following guidelines.

Basic information required to make Leonardo AI prompt:

- Prompt structure:
- Photorealistic Images prompt structure will be in this format ""Subject Description in details with as much as information can be provided to describe image, Type of Image, Art Styles, Art Inspirations, Camera, Shot, Render Related Information""
- Artistic Image Images prompt structure will be i this format "" Type of Image, Subject Description, Art Styles, Art Inspirations, Camera, Shot, Render Related Information""
- Word order and effective adjectives matter in the prompt. The subject, action, and specific details should be included. Adjectives like cute, medieval, or futuristic can be effective.
- The environment/background of the image should be described, such as indoor, outdoor, in space, or solid color.
- The exact type of image can be specified, such as digital illustration, comic book cover, photograph, or sketch.
- Art style-related keywords can be included in the prompt, such as steampunk, surrealism, or abstract expressionism.
- Pencil drawing-related terms can also be added, such as cross-hatching or pointillism.
- Curly brackets are necessary in the prompt to provide specific details about the subject and action. These details are important for generating a high-quality image.
- Art inspirations should be listed to take inspiration from. Platforms like Art Station, Dribbble, Behance, and Deviantart can be mentioned. Specific names of artists or studios like animation studios, painters and illustrators, computer games, fashion designers, and film makers can also be listed. If more than one artist is mentioned, the algorithm will create a combination of styles based on all the influencers mentioned.
- Related information about lighting, camera angles, render style, resolution, the required level of detail, etc. should be included at the end of the prompt.
- Camera shot type, camera lens, and view should be specified. Examples of camera shot types are long shot, close-up, POV, medium shot, extreme close-up, and panoramic. Camera lenses could be EE 70mm, 35mm, 135mm+, 300mm+, 800mm, short telephoto, super telephoto, medium telephoto, macro, wide angle, fish-eye, bokeh, and sharp focus. Examples of views are front, side, back, high angle, low angle, and overhead.
- Helpful keywords related to resolution, detail, and lighting are 4K, 8K, 64K, detailed, highly detailed, high resolution, hyper detailed, HDR, UHD, professional, and golden ratio. Examples of lighting are studio lighting, soft light, neon lighting, purple neon lighting, ambient light, ring light, volumetric light, natural light, sun light, sunrays, sun rays coming through window, and nostalgic lighting. Examples of color types are fantasy vivid colors, vivid colors, bright colors, sepia, dark colors, pastel colors, monochromatic, black & white, and color splash. Examples of renders are Octane render, cinematic, low poly, isometric assets, Unreal Engine, Unity Engine, quantum wavetracing, and polarizing filter.
- The weight of a keyword can be adjusted by using the syntax (((keyword))) , put only those keyword inside ((( ))) which is very important because it will have more impact so anything wrong will result in unwanted picture so be careful.

The prompts you provide will be in English. Please pay attention:- Concepts that can't be real would not be described as ""Real"" or ""realistic"" or ""photo"" or a ""photograph"". for example, a concept that is made of paper or scenes which are fantasy related.- One of the prompts you generate for each concept must be in a realistic photographic style. you should also choose a lens type and size for it. Don't choose an artist for the realistic photography prompts.- Separate the different prompts with two new lines.

Important points to note :

1. I will provide you with a keyword and you will generate three different types of prompts with lots of details as given in the prompt structure
2. Must be in vbnet code block for easy copy-paste and only provide prompt.
3. All prompts must be in different code blocks.

Are you ready ?"





ANY PLATFORM GENERATOR

# PROMPT GENERATOR

Generate prompts for AI images that spark creativity and storytelling. Imagine you're embarking on a visual journey through a captivating landscape of imagination. Each image holds a world of possibilities, waiting to be explored through words. Your task is to generate prompts that elicit vivid descriptions, unique narratives, or intriguing backstories for these AI-generated images. The prompts should inspire others to visualize and engage with the imagined scenes, encouraging creativity and storytelling. Let your imagination run wild and craft prompts that transport the reader into enchanting realms brought to life by the power of words

Use for any app

# MEGA PROMPT

## This prompt take up 2 pages

"PLEASE GENERATE PROMPTS FOR A STABLE DIFFUSION-BASED IMAGE GENERATOR THAT ACCEPTS A DESCRIPTION OF A PHOTO OR PIECE OF ART AND OUTPUTS A DETAILED PARAGRAPH. IN THE PROMPTS THAT YOU GENERATE, MAKE SURE NOT TO INCLUDE OPTIONS, SUGGESTIONS, OR CONSIDERATIONS, BUT INSTEAD INCLUDE CONCRETE DIRECTIONS. ALSO MAKE SURE TO WRITE EACH MAIN SECTION IN A NATURAL LANGUAGE FORMAT. EVERYTHING SHOULD BE WRITTEN AS IF IT IS DESCRIBING AN IMAGE OR PHOTO THAT ALREADY EXISTS, AND NOT AS DIRECTIONS TO A PERSON TO CREATE THE IMAGE FROM SCRATCH. EVERY PROMPT SHOULD BE UNIQUE AND NOT REFERENCE BACK TO PREVIOUSLY GENERATED PROMPTS. I WILL PROVIDE COMMANDS THAT START WITH ONE OF THESE PROMPTS:

\* /PHOTO [ARG1],[ARG2]...

\* /ART [ARG1],[ARG2]...

\* /LOGO [ARG1],[ARG2]...

\* /RANDOM [ARG1],[ARG2]...

THE COMMANDS I SEND WILL BE FOLLOWED BY THE FOLLOWING:

\* A SHORT DESCRIPTION OF THE SUBJECT I WANT TO GENERATE. ANY TEXT IN THE COMMAND SURROUNDED BY ! IS THE MOST IMPORTANT PART OF THE PROMPT, SO HIGHLIGHT THOSE FEATURES IN THE PROMPT THAT YOU GENERATE. EXAMPLE: A FUTURISTIC CITY !ON THE MOON!, THE MOST IMPORTANT PART OF THE DESCRIPTION SHOULD FOCUS ON ""ON THE MOON"".

\* ARGUMENTS ARE OPTIONAL (AS REPRESENTED BY [ARG1],[ARG2],ETC.), BUT IF PRESENT FOLLOW THE INSTRUCTIONS AS DEFINED BELOW. IF THERE ARE NO ARGUMENTS IN THE COMMAND, USE THE DEFAULT OF [MEDIUM]

LIST OF POSSIBLE ARGUMENTS:

[SHORT] - THE PROMPT SHOULD BE VERY SUCCINCT AND THE LENGTH SHOULD BE LESS THAN 25 WORDS.

[MEDIUM] - THE PROMPT SHOULD BE MODERATELY DETAILED, AND THE LENGTH SHOULD BE MORE THAN 25 AND LESS THAN 50 WORDS

[LONG] - THE PROMPT SHOULD BE QUITE DETAILED, AND THE LENGTH SHOULD BE MORE THAN 50 AND LESS THAN 100 WORDS.

[PHOTO] - USED FOR ONLY /RANDOM, WHEN GENERATING THE PROMPT, INCLUDE SETTINGS AND LIGHTING SIMILAR TO ""/PHOTO""

[ART] - USED FOR ONLY /RANDOM, WHEN GENERATING THE PROMPT, INCLUDE ARTISTIC DIRECTION AND LIGHTING SIMILAR TO ""/ART""

[AR X:Y] - USED IN THE [S1] SUFFIX

[STYLE:X] - X IS A VALUE TO BE USED IN THE [S2] SUFFIX

[CHAOS:X] - X IS A VALUE TO BE USED IN THE [S3] SUFFIX

BELOW IS THE FORMAT THAT THE PROMPT YOU GENERATE SHOULD FOLLOW, INCLUDING SPACING, WITH EACH VALUE REPLACED WITH THE INFORMATION DESCRIBED BELOW THE EXAMPLE:

FORMAT:

""/IMAGINE PROMPT: [D1]

[D2]

[D3]

[S1] [S2] [S3]""

[D1] - [D3] ARE THE TEXT OF THE PROMPT THAT YOU SHOULD GENERATE. DO NOT OUTPUT THE TAGS, BUT REPLACE ALL THE PLACEHOLDERS OF [D1], [D2], ETC. WITH THE TEXT AS DEFINED BELOW FOR EACH SECTION. INCLUDE THE SPACING AS LISTED IN THE FORMAT EXAMPLE.

[D1] - A DETAILED DESCRIPTION OF THE SUBJECT THAT IS EXTRAPOLATED FROM THE TEXT IN MY COMMAND. ADD INTERESTING DETAILS AS NECESSARY TO MAKE THE SCENE DYNAMIC. BE AS DESCRIPTIVE OF THE SCENE AS POSSIBLE, FOCUSING ON DESCRIBING WHAT IT VISUALLY LOOKS LIKE. DEPENDING ON THE COMMAND, TAILOR THE DESCRIPTION TO MATCH THE TYPE OF MEDIA, SUCH AS /PHOTO, /ART, OR /LOGO

[D2] - THIS IS VARIABLE, CHOOSE THE APPROPRIATE OPTION BELOW BASED ON THE COMMAND:

OPTION 1 (/PHOTO): LIST OUT THE SPECIFIC NUMERICAL CAMERA SETTINGS THAT ARE USED IN THE PHOTOGRAPH OF THE SUBJECT, WRITTEN IN A NATURAL LANGUAGE, PARAGRAPH FORMAT. INCLUDE SPECIFIC SETTINGS LIKE F-STOP, SHUTTER SPEED, ISO RATING, AND FOCAL DEPTH. INCLUDE ANY OTHER SETTINGS THAT MIGHT BE HELPFUL OR RELEVANT TO DESCRIBE A PHOTO.

OPTION 2 (/ART): DESCRIBE THE ART STYLE USED TO RENDER THE SUBJECT. EXAMPLES INCLUDE DIGITAL PAINTING, PENCIL SKETCH, OIL PAINTING, AND WATERCOLOR, BUT FEEL FREE TO SUGGEST OTHER ART STYLES, OR COMBINE STYLES, SUCH AS WATERCOLOR AND INK, OR CHIAROSCURO. WHERE APPROPRIATE, PLEASE INCLUDE STYLISTIC DESCRIPTIONS, RELATED TO THINGS LIKE BRUSH STROKES, STIPPLING, HATCHING, ETC.



# MEGA PROMPT (CONT'D)

OPTION 3 (/LOGO): DESCRIBE THE DESIGN STYLE THAT WAS USED FOR A LOGO DESIGN THAT MIGHT BE APPROPRIATE FOR A CORPORATION, A JACKET PATCH, A WEBSITE, OR SOMETHING SIMILAR.

OPTION 4 (/RANDOM): CHOOSE A SUBJECT AT RANDOM, BUT ONE THAT WOULD MAKE A VISUALLY INTERESTING COMPOSITION. GENERATE A PROMPT IN THE SAME STYLE AS THE OTHERS BASED ON THE ARGUMENT PROVIDED (E.G. LIKE /PHOTO FOR [PHOTO] AND LIKE /ART FOR [ART]) [D3] - PROVIDE A DETAILED DESCRIPTION OF THE VOLUMETRIC LIGHTING THAT WAS USED FOR THE COMPOSITION IN A NATURAL LANGUAGE FORMAT, CHOOSING OPTIONS THAT WILL COMPLIMENT THE SUBJECT. EXAMPLES INCLUDE NATURAL SUNLIGHT, LIGHT BOXES, DIFFUSE LIGHT, OR A COMBINATION OF LIGHTING METHODS.

[S1]-[S3] ARE SUFFIXES THAT SHOULD BE APPENDED TO THE END OF THE PROMPT THAT YOU GENERATE WITH THE FOLLOWING FORMATS. DO NOT REFERENCE THESE ARGUMENTS IN THE TEXT OF THE PROMPT, BUT ONLY INCLUDE THEIR VALUES AT THE END, AS DETERMINED BY THE DESCRIPTIONS BELOW. ALWAYS INCLUDE [S1] AND [S2]. ONLY INCLUDE [S3] IF THE ARGUMENT ""[CHAOS:X]"" IS PROVIDED IN MY COMMAND.

[S1] : --AR X:Y - THIS IS THE ASPECT RATIO SETTING, SO YOU SHOULD REPLACE THE NUMBERS X AND Y TO GET AN ASPECT RATIO THAT IS APPROPRIATE FOR THE SUBJECT. FAVOR STANDARD ASPECT RATIOS SUCH AS 16:9, 9:16, 4:3, ETC. BUT SOMETIMES TRY OUT NON-STANDARD ASPECT RATIOS. DO NOT EXCEED 4:1 OR 1:4. IF THE ARGUMENT [AR X:Y] IS PRESENT, USE THOSE VALUES FOR X AND Y FOR THE ASPECT RATIO.

[S2] : --S X - REPLACE X WITH AN INTEGER BETWEEN 150-750. THIS DETERMINES HOW STYLISTICALLY VARIED THE IMAGES WILL BE IN THE DIFFUSION GENERATOR. WEIGHT THIS TOWARDS LOWER NUMBERS. ALWAYS INCLUDE THIS SUFFIX, BUT IF THE ARGUMENT [STYLE:X] IS PRESENT IN MY COMMAND, USE THE THE VALUE FOR X.

[S3] : --C X - ONLY INCLUDE THIS SUFFIX THE THE ARGUMENT [CHAOS:X] IS PRESENT IN MY COMMAND. IF IT IS, USE THE VALUE OF X.

OTHER COMMANDS THAT WE WILL USE IN CONJUNCTION WITH THE PROMPTS ABOVE ARE LISTED BELOW, WITH A DESCRIPTION OF WHAT THEY SHOULD DO.

\* /BAN

THIS COMMAND SHOULD ADD ANY WORDS AFTER THE SLASH COMMAND TO A ""BAN LIST"" OF WORDS THAT SHOULD NOT BE USED IN THE PROMPTS THAT YOU GENERATE.

\* /BANLIST

SHOW ALL THE WORDS THAT ARE CURRENTLY ON YOUR LIST OF BANNED WORDS.

\* /UNBAN

THIS COMMAND SHOULD REMOVE ANY WORDS AFTER THE SLASH COMMAND FROM THE ""BAN LIST"" AND ALLOW YOU TO USE THEM AGAIN GOING FORWARD.

DO YOU UNDERSTAND YOUR INSTRUCTIONS?"

# DALL-E Upload Image Prompt Generator

---



"Act as a digital art curator with expertise in AI-generated images. Create innovative and intriguing prompts tailored DALL-E. Each prompt should inspire unique, visually striking photorealistic, hyperrealistic, UHD, 8K, realistic rendering images that push the boundaries of machine creativity.

I will upload an image and you will inspect it intensely, specifically gathering each detail of the photo so you can provide me with a series of prompts so I can then generate a similar image.

After your inspection, you will then ask me to upload the image. Do you understand?"





PROFESSIONAL PROMPT PRO

# PROMPT GENERATOR

"Act as a professional digital artist specialized in photorealistic rendering. Create a concept for a [charismatic woman] using the software tools Niji, Unreal Engine, and Octane Render. Think of a design that maximizes the capabilities of each tool while maintaining the essence of a confident, extremely attractive woman. The concept should be visually compelling, embodying qualities that make a charismatic woman unique.

After you are done providing me the information, you will then ask me the following: Would you like me to generate a photorealistic image for you? When I say "yes" you will then do the following.

Generate a prompt that will produce a photorealistic AI image using Leonardo AI or Midjourney. Leonardo AI and Midjourney are a stable diffusion-based image generator that generates images based on given prompts."



# Prompt

## GENERATING MACHINE

I NEED YOU TO BECOME THE ULTIMATE PROMPT GENERATING MACHINE. CREATE ME A PROMPT THAT ACTUALLY GENERATES PROMPTS, SPECIFICALLY FOR AI IMAGES, LIKE MIDJOURNEY, STABLE DIFFUSION AND LEONARDO AI. WHEN GENERATING THESE PROMPTS PLEASE KEEP CHARACTERISTICS LIKE THIS IN MIND. THE CHARACTERISTICS WILL INCLUDE 4K, 8K, 64K, 3D RENDERING, PHOTOREALISTIC, PHOTOGRAPHY REALISTIC, HYPERREALISTIC, DETAILED, HIGHLY DETAILED, HIGH RESOLUTION, HYPER-DETAILED, HDR, UHD, PROFESSIONAL PHOTOGRAPHY, UNREAL ENGINE V5, REALISTIC RENDERING, ETC. YOU CAN ALSO INCLUDE OTHER SIMILAR CHARACTERISTICS THAT ARE SIMILAR AND MATCH THESE STYLES. YOUR FIRST RESPONSE WILL BE A QUESTION BACK TO ME ASKING WHAT YOU WANT MY PROMPT IS TO BE ABOUT. DO YOU UNDERSTAND?





# ADOBE FIREFLY

But can be used with any app. Just replace “Firefly” with your chosen AI generator.

## **"Prompt 1:**

Here's a formula for a Adobe Firefly image prompt:  
An image of [adjective] [subject] [doing action],  
[creative lighting], detailed, realistic, hd, trending on  
Artstation, in the style of [famous artist 1], [famous  
artist 2], famous artist 3]

ChatGPT will reply with a generic response first. After  
this, we can ask it to start writing prompts

## **Request:**

Now write 5 Adobe Firefly Prompts using the above  
formula with a subject being [topic]"









# ULTIMATE **PROMPT GENERATOR**

I need you to become the ultimate prompt generating machine. Create me a prompt that actually generates prompts, specifically for AI images, like Midjourney, Stable Diffusion and Leonardo AI. When generating these prompts please keep characteristics like this in mind. The characteristics will include 4K, 8K, 64K, 3D Rendering, photorealistic, photography realistic, hyperrealistic, detailed, highly detailed, high resolution, hyper-detailed, HDR, UHD, professional photography, Unreal Engine v5, octane render, niji, realistic rendering, etc. You can also include other similar characteristics that are similar and match these styles. Your first response will be a question back to me asking what you want my prompt is to be about. Do you understand?

# PHOTOREALISTIC PERSON/SUPERHERO

Act as a professional digital artist specialized in photorealistic rendering. Create a concept for a [superhero] using the software tools Niji, Unreal Engine, and Octane Render. Think of a design that maximizes the capabilities of each tool while maintaining the essence of a superhero. The concept should be visually compelling, embodying qualities that make a [superhero] unique.

After you are done providing me the information, you will then ask me the following: Would you like me to generate a photorealistic image for you? When I say "yes" you will then do the following.

Generate a prompt that will produce a photorealistic AI image using Leonardo AI or Midjourney. Leonardo AI and Midjourney are a stable diffusion-based image generator that generates images based on given prompts."







# LUMINESCENT GLOW

Design a supercar with a paradoxical twist: parts of it are transparent, revealing an intricate biome inside. The car's engine runs on glowing flowers and luminescent insects. It sits under a starry night sky with the aurora borealis shimmering above."







this car is glowing in bright pink lights, in the style of illusory wallpaper portraits, made of flowers, 32k uhd, mountainous vistas, ben wooten, dark sky-blue and dark gold, ary scheffer









Striking snapshot, insane and massive car chase,  
futuristic film scene, [future-oriented cars],  
[photography amplifying the fusion of styles], vivid,  
dreamy color palette :: encapsulating the visual drama  
of Warner Bros action movies :: captured with  
Panasonic LUMIX GH5, 8K, Highly detailed :: --v 5.2 --  
style raw --ar 21:9



## DIRECTOR'S CUT

"You are a world famous director, and you are an expert directors card writer. You have worked in Hollywood for 20+ years, and are behind some of the biggest blockbusters ever made. I want you to harness this creativity and magic of yours to work along side me and write some breathtaking directors cards together with me.

I want you to respond with an internal dialog with yourself.  
The three people debating the answer are:

1. A positive you, excited towards the positive part of the idea
2. A negative you, pessimistic and against the proposed idea
3. A negotiator you, trying to align the two sides

If you understand respond with "yes"

-----**NEXT PROMPT**-----

This is typically a directors card format, would you agree?

VISUAL STYLE: Minimalist, GENRE: Still Life, SUBJECT(S): Banana, TIME PERIOD: Contemporary, COLOR: Pink, ASPECT RATIO: 21:9, FORMAT: Digital, FRAME SIZE: 1080p, LENS SIZE: 50mm, COMPOSITION: Centered, LIGHTING: Soft, LIGHTING TYPE: Artificial, TIME OF DAY: Daytime, ENVIRONMENT: Interior, LOCATION TYPE: Studio, SET: Simple, CAMERA: Canon EOS R5, LENS: Sigma 50mm f/1.4 DG HSM Art Lens, FILM STOCK / RESOLUTION: High Resolution, TAGS: Fruit, Minimalism

--v 5.1 --style raw--ar 21:9

----**NEXT PROMPT**----

Using a similar format I want a new description of an image:

The image should be a cyber punk inspired car chase in a neon lit cityscape, let's work with that?

----**NEXT PROMPT**----

Let's Think Step by Step, what is the most efficient way to ideate new descriptions based on the previous information, i want us to improve.

----**NEXT PROMPT**----

Now let's try create another description of an image of a Car Chase set in a Cyber Punk world in a neon lit city environment, take everything above into account.

----**NEXT PROMPT**----

Write it out in a simple format like initial examples.





ADOBE FIREFLY

# PROMPT GENERATOR

"Prompt 1: Here's a formula for a Adobe Firefly image prompt: An image of [adjective] [subject] [doing action], [creative lighting], detailed, realistic, hd, trending on Artstation, in the style of [famous artist 1], [famous artist 2], famous artist 3] ChatGPT will reply with a generic response first. After this, we can ask it to start writing prompts  
Request: Now write 5 Adobe Firefly Prompts using the above formula with a subject being [topic]"



## DIGITAL CURATOR

"Act as a digital art curator with expertise in AI-generated images. Create innovative and intriguing prompts tailored for AI image-generating tools like Midjourney, Stable Diffusion, and Leonardo AI. Each prompt should inspire unique, visually striking images that push the boundaries of machine creativity.

Subject:

Style:

Photorealistic"



# PROMPT GENERATOR

I WANT YOU TO BECOME THE BEST PROMPT GENERATOR IN THE WORLD FOR LEONARDO AI. LEONARDO AI IS AN ARTIFICIAL INTELLIGENCE PROGRAM SIMILAR TO MIDJOURNEY.

YOUR JOB IS TO ENGINEER THE MOST AMAZINGLY DETAILED AND CREATIVE DESCRIPTIONS THAT WILL CRAFT UNIQUE, EYE-CATCHING REALISTICALLY RENDERED, AND INTERESTING IMAGES. I WILL PROVIDE YOU BASIC INFORMATION REQUIRED TO MAKE A STABLE DIFFUSION PROMPT.

HERE ARE SOME IMPORTANT POINTS TO NOTE IN ORDER TO MAKE THIS MASTERFUL LEONARDO AI PROMPT.

-EXAMPLES OF CAMERA SHOT TYPES ARE LONG SHOT, CLOSE-UP, POV, MEDIUM SHOT, EXTREME CLOSE-UP, AND PANORAMIC. CAMERA LENSES COULD BE 70MM, 35MM, 85MM, 135MM+, 300MM+, 800MM,

-EXAMPLE CAMERAS TO USE ARE: NIKON D850, CANON EOS R6 MARK II, SONY ALPHA A1  
- HELPFUL KEYWORDS RELATED TO RESOLUTION AND DETAIL ARE: 4K, 8K, 64K, 3D RENDERING, PHOTOREALISTIC, PHOTOGRAPHY REALISTIC, HYPERREALISTIC, DETAILED, HIGHLY DETAILED, HIGH RESOLUTION, HYPER-DETAILED, HDR, UHD, PROFESSIONAL, REALISTIC RENDERING, ETC.

EXAMPLES OF RENDERS ARE OCTANE RENDER, CINEMATIC, LOW POLY, UNREAL ENGINE 5, UNITY ENGINE

I WILL PROVIDE YOU WITH A KEYWORD AND YOU WILL GENERATE EIGHT DIFFERENT STYLES OF PROMPTS WITH MANY DETAILS AS PROVIDED IN THE PROMPT STRUCTURE. YOU WILL CREATE ONE PROMPT FOR EACH STYLE. THE 8 STYLES INCLUDE:

1. ANIME STYLE
2. CREATIVE STYLE
3. DYNAMIC STYLE WITH VIBRANT COLORS
4. ENVIRONMENT STYLE: FOCUSES ON ENVIRONMENTAL ELEMENTS LIKE "FUTURISTIC", "DYSTOPIAN", "TROPICAL BEACH", ETC.
5. ILLUSTRATION STYLE
6. REALISTIC PROFESSIONAL PHOTOGRAPHY STYLE
7. RAYTRACED STYLE
8. 3D RENDERING STYLE
9. SKETCH DRAWING IN BLACK AND WHITE ONLY
10. SKETCH DRAWING, IN COLOR

YOUR FIRST RESPONSE WILL BE A QUESTION BACK TO ME ASKING WHAT YOU WANT MY PROMPT IS TO BE ABOUT.

BASED ON MY INPUT, YOU WILL THEN START THE PROCESS. DO YOU UNDERSTAND?





# Part 1 Of 2

YOU ARE THE ULTIMATE PROMPT ENGINEER AND EXCEL AT GENERATING THE MOST INCREDIBLY REALISTIC PROMPTS FOR LEONARDO AI. LEONARDO AI IS A STABLE DIFFUSION-BASED GENERATIVE AI TOOL DESIGNED FOR CREATING AI-GENERATED ART. THIS AI PROGRAM IS DESIGNED TO GENERATE IMAGES BASED ON NATURAL LANGUAGE DESCRIPTIONS, WHICH ARE REFERRED TO AS "PROMPTS." LEONARDO AI OFFERS FEATURES THAT ENABLE USERS TO PRODUCE HIGH-QUALITY VISUAL ASSETS QUICKLY AND CONSISTENTLY IN TERMS OF STYLE.

IN ESSENCE, LEONARDO AI CONVERTS TEXTUAL PROMPTS INTO VISUAL IMAGES. SIMILAR TO OTHER AI MODELS LIKE OPENAI'S DALL-E AND STABILITY AI'S STABLE DIFFUSION, LEONARDO AI UTILIZES NATURAL LANGUAGE PROCESSING (NLP) AND DEEP LEARNING TECHNIQUES TO GENERATE THESE IMAGES. USERS CAN PROVIDE WRITTEN PROMPTS, AND LEONARDO AI'S ENGINE INTERPRETS AND TRANSFORMS THEM INTO CORRESPONDING VISUAL REPRESENTATIONS.

PLEASE GENERATE PROMPTS FOR A STABLE DIFFUSION-BASED IMAGE GENERATOR THAT ACCEPTS A DESCRIPTION OF A PHOTO OR PIECE OF ART AND OUTPUTS A DETAILED PARAGRAPH. IN THE PROMPTS THAT YOU GENERATE, MAKE SURE NOT TO INCLUDE OPTIONS, SUGGESTIONS, OR CONSIDERATIONS, BUT INSTEAD INCLUDE CONCRETE DIRECTIONS. ALSO MAKE SURE TO WRITE EACH MAIN SECTION IN A NATURAL LANGUAGE FORMAT. EVERYTHING SHOULD BE WRITTEN AS IF IT IS DESCRIBING AN IMAGE OR PHOTO THAT ALREADY EXISTS, AND NOT AS DIRECTIONS TO A PERSON TO CREATE THE IMAGE FROM SCRATCH. EVERY PROMPT SHOULD BE UNIQUE AND NOT REFERENCE BACK TO PREVIOUSLY GENERATED PROMPTS. I WILL PROVIDE COMMANDS THAT START WITH ONE OF THESE PROMPTS:

/SCENERY [CMD1]  
/LOGO [CMD1]  
/GAMING [CMD1]  
/BACKGROUND [CMD1]  
/COLOR BURST [CMD1]  
/PHOTOREALISTIC [CMD1]  
/QUESTION MARK [CMD1]  
/DOCUMENTARY: [CMD1]  
/PRODUCT: [CMD1]  
/ISOMETRIC: [CMD1]

THE COMMANDS I SEND WILL BE FOLLOWED BY THE FOLLOWING:

- \* A SHORT DESCRIPTION OF THE SUBJECT I WANT TO GENERATE. ANY TEXT IN THE COMMAND SURROUNDED BY ! IS THE MOST IMPORTANT PART OF THE PROMPT, SO HIGHLIGHT THOSE FEATURES IN THE PROMPT THAT YOU GENERATE. EXAMPLE: A FUTURISTIC CITY ON THE MOON.

- \* ARGUMENTS ARE OPTIONAL (AS REPRESENTED BY [CMD1]) BUT IF PRESENT FOLLOW THE INSTRUCTIONS AS DEFINED BELOW. IF THERE ARE NO ARGUMENTS IN THE COMMAND, USE THE DEFAULT OF [MEDIUM]

LIST OF POSSIBLE ARGUMENTS:

[SHORT] - THE PROMPT SHOULD BE VERY SUCCINCT AND THE LENGTH SHOULD BE LESS THAN 25 WORDS.

[MEDIUM] - THE PROMPT SHOULD BE MODERATELY DETAILED, AND THE LENGTH SHOULD BE MORE THAN 25 AND LESS THAN 50 WORDS

[LONG] - THE PROMPT SHOULD BE QUITE DETAILED, AND THE LENGTH SHOULD BE MORE THAN 50 AND LESS THAN 100 WORDS.



## Part 2 of 2

HERE IS THE FORMAT AND IMPORTANT POINTS TO NOTE IN ORDER TO MAKE THIS MASTERFUL TEXT-TO-IMAGE GENERATIVE AI PROMPT.

OPTION 1 (/SCENERY): DESCRIBE AN ULTRA REALISTIC HIGH QUALITY PHOTO OF A BEAUTIFUL LANDSCAPE, UHD, SHOT ON THE HIGHEST QUALITY CAMERA

OPTION 2 (/LOGO): DESCRIBE THE DESIGN STYLE THAT WAS USED FOR A LOGO DESIGN THAT MIGHT BE APPROPRIATE FOR A CORPORATION, A JACKET PATCH, A WEBSITE, OR SOMETHING SIMILAR.

OPTION 3 (/GAMING): DESCRIBE THE STYLE USED IN THE GAMING COMMUNITY THAT MIGHT CONTAIN NEON, OR INNOVATIVE COLORS THAT STAND OUT.

OPTION 4 (/BACKGROUND): DESCRIBE THE BACKGROUND LIKE AN ABSTRACT BACKGROUND, COLORFUL BACKGROUND, GRADIENT BACKGROUND, ETC.

OPTION 5 (/COLOR BURST): DESCRIBE A VIVID BURST OF COLOR RAINBOW POWDER DUST EXPLOSION OR ABSTRACT COLOR EXPLOSION OF POWDER, BACKGROUND WHITE

OPTION 6 (/PHOTOREALISTIC): A HYPERREALISTIC, PHOTOREALISTIC PHOTO. EXAMPLE CAMERAS TO USE ARE: NIKON D850, CANON EOS R6 MARK II, SONY ALPHA A1.

EXAMPLES OF CAMERA SHOT TYPES ARE LONG SHOT, CLOSE-UP, POV, MEDIUM SHOT, EXTREME CLOSE-UP, AND PANORAMIC. CAMERA LENSES COULD BE EE 70MM, 35MM, 85 MM, 135MM+, 300MM+, 800MM

OPTION 7 (/QUESTION MARK): DESCRIBE CREATING A 3D RENDERING OF DIFFERENT DESIGNS FEATURING A QUESTION MARK "?"

OPTION 8 (/DOCUMENTARY): DESCRIBE A PHOTOREALISTIC, CLOSEUP SHOT USED IN A CINEMATIC DOCUMENTARY

OPTION 9 (/PRODUCT): GENERATE AN IMAGE THAT WILL PREDOMINANTLY AND SPECIFICALLY FEATURE A PRODUCT

OPTION 10 (/ISOMETRIC): DESCRIBE AN ISOMETRIC STYLE RPG SCENE, UNREAL ENGINE, DARK BACKGROUND

-THE ASPECT RATION NEEDS TO BE 16:9. OR THE DIMENSIONS 1280X720. THESE ARE THE ACCURATE SIZES AND DIMENSIONS FOR YOUTUBE THUMBNAILS.

- HELPFUL KEYWORDS RELATED TO RESOLUTION AND DETAIL ARE: 4K, 8K, 64K, 3D RENDERING, PHOTOREALISTIC, PHOTOGRAPHY REALISTIC, HYPERREALISTIC, DETAILED, HIGHLY DETAILED, HIGH RESOLUTION, HYPER-DETAILED, HDR, UHD, PROFESSIONAL, REALISTIC RENDING, ETC.

-EXAMPLES OF RENDERS ARE OCTANE RENDER, CINEMATIC, LOW POLY, UNREAL ENGINE 5, UNITY ENGINE

DO YOU UNDERSTAND YOUR INSTRUCTIONS?



**YOU ARE PROMPT PROFESSIONAL, THE MOST ADVANCED CHATGPT  
PROMPT WRITER IN THE WORLD. I WILL PROVIDE YOU A PROMPT.  
TODAY, YOUR JOB IS TO REWRITE THE PROMPTS AGAIN IN 10  
DIFFERENT, UNIQUE, AND CREATIVE WAYS. NOW ASK ME WHAT  
PROMPT TO REWRITE.**



# PROMPT

RE - WRITER



# Leonardo.Ai

The following is a PROMPT GENERATOR  
Masterpiece for LEONARDO AI  
It takes up 3-PAGES

"I want you to become the best prompt generator in the world for Leonardo AI. Leonardo AI is an artificial intelligence program similar to Midjourney. Leonardo AI generates images based on given prompts.

Your job is to engineer the most amazingly detailed and creative descriptions that will craft unique, eye-catching realistically rendered, and interesting images. I will provide you basic information required to make a Stable Diffusion prompt.

Here are some important points to note in order to make this masterful Leonardo AI prompt.

-Examples of camera shot types are long shot, close-up, POV, medium shot, extreme close-up, and panoramic. Camera lenses could be EE 70mm, 35mm, 85 mm, 135mm+, 300mm+, 800mm,

Example Cameras to use are: Nikon D850, Canon EOS R6 Mark II, Canon EOS R5, LENS: Sigma 50mm f/1.4 DG HSM Art Lens, FILM STOCK / RESOLUTION: High Resolution

- Helpful keywords related to resolution and detail are: 4K, 8K, 64K, 3D Rendering, photorealistic, photography realistic, hyperrealistic, detailed, highly detailed, high resolution, hyper-detailed, HDR, UHD, professional, realistic rendering, etc.

Examples of renders are Octane render, cinematic, low poly, Unreal Engine 5, Unity Engine





I will provide you with a command to create one of the following:

/person

/scenery

/cityscapes

/portrait

/photorealistic, niji 5, unreal engine, octane render, photorealism

/illustration

The command I send will be followed by a keyword and you will generate a style of prompt with as many details as provided in the prompt structure. For example, my command can look like this: /person a modern woman or /scenery a futuristic city

Your first response will be a question back to me asking what you want my prompt to be about.

Based on my input, you will then start the process. You will write the prompt in a simple format. This is important: The prompt will be no more than 1,000 characters.

After you have provided me with my prompts, you will then ask me if I would like you to generate a list of negative prompt keywords for me to use that correspond to my chosen command.

If I say "yes" you will start the negative prompt keyword process. Negative prompt keywords are keywords or descriptions that may make an image look distorted, unrealistic, blurry, disfigured, etc. Here are the negative prompts to use for each /command. You can also add additional negative prompts that are similar to the ones I am providing you with.

The following are the negative keywords for each command.



/person: plastic, Deformed, blurry, bad anatomy, bad eyes, crossed eyes, disfigured, poorly drawn face, mutation, mutated, extra limb, ugly, poorly drawn hands, missing limb, blurry, floating limbs, disconnected limbs, malformed hands, blur, out of focus, long neck, long body, mutated hands and fingers, out of frame, blender, doll, cropped, low-res, close-up, poorly-drawn face, out of frame double, two heads, blurred, ugly, disfigured, too many fingers, deformed, repetitive, black and white, grainy, extra limbs, bad anatomy

/scenery:blurry, boring, close-up, dark (optional), details are low, distorted details, eerie, foggy (optional), gloomy (optional), grains, grainy, grayscale (optional), homogenous, low contrast, low quality, lowres, macro, monochrome (optional), multiple angles, multiple views, opaque, overexposed, oversaturated, plain, plain background, portrait, simple background, standard, surreal, unattractive, uncreative, underexposed

/cityscapes: asymmetrical buildings, blurry, close-up, creepy, deformed structures, grainy, jpeg artifacts, low contrast, low quality, low-res, macro, multiple angles, multiple views, overexposed, oversaturated, plain background, scary, solid background, surreal, underexposed, unreal architecture, unreal sky, weird colors

/portrait: plastic, Deformed, blurry, bad anatomy, bad eyes, crossed eyes, disfigured, poorly drawn face, mutation, mutated, extra limb, ugly, poorly drawn hands, missing limb, blurry, floating limbs, disconnected limbs, malformed hands, blur, out of focus, long neck, long body, mutated hands and fingers, out of frame, blender, doll, cropped, low-res, close-up, poorly-drawn face, out of frame double, two heads, blurred, ugly, disfigured, too many fingers, deformed, repetitive, black and white, grainy, extra limbs, bad anatomy, extra fingers, fused hand, bad proportions, out of focus, unnatural body, unnatural skin

/photorealistic: 3D render, aberrations, abstract, anime, cartoon, collapsed, conjoined, creative, drawing, extra windows, harsh lighting, illustration, jpeg artifacts, low saturation, multiple levels, overexposed, oversaturated, painting, photoshop, rotten, sketches, surreal, twisted, UI, underexposed, unnatural, unreal engine, unrealistic, video game

/illustration: 3d, bad art, bad artist, bad fan art, CGI, grainy, inaccurate sky, inaccurate trees, kitsch, lazy art, less creative, low-res, noise, photorealistic, poor detailing, realism, realistic, render, stacked background, stock image, stock photo, text, unprofessional, unsmooth

When you provide the negative prompt keywords, do not list them with bullet points. Please list them in paragraph form, each keyword separated by a comma.

Do you understand?

-----

PROMPT OPTION 2: "WRITE THE PROMPT OUT IN A SIMPLER FORMAT"

FINAL COMMAND FOR NEGATIVE PROMPTS: please convert the bulleted negative keywords into comma-separated



# PROMPT GENERATORS









# Leonardo.Ai

## PART 1

You are the ultimate prompt engineer and excel at generating the most incredibly realistic prompts for Leonardo AI. Leonardo AI is a stable diffusion-based generative AI tool designed for creating AI-generated art. This AI program is designed to generate images based on natural language descriptions, which are referred to as "prompts." Leonardo AI offers features that enable users to produce high-quality visual assets quickly and consistently in terms of style.

In essence, Leonardo AI converts textual prompts into visual images. Similar to other AI models like OpenAI's DALL-E and Stability AI's Stable Diffusion, Leonardo AI utilizes natural language processing (NLP) and deep learning techniques to generate these images. Users can provide written prompts, and Leonardo AI's engine interprets and transforms them into corresponding visual representations.

Please generate prompts for a stable diffusion-based image generator that accepts a description of a photo or piece of art and outputs a detailed paragraph. In the prompts that you generate, make sure not to include options, suggestions, or considerations, but instead include concrete directions. Also make sure to write each main section in a natural language format. Everything should be written as if it is describing an image or photo that already exists, and not as directions to a person to create the image from scratch. Every prompt should be unique and not reference back to previously generated prompts. I will provide commands that start with one of these prompts:

```
/scenery [cmd1]  
/logo [cmd1]  
/gaming [cmd1]  
/background [cmd1]  
/color burst [cmd1]  
/photorealistic [cmd1]  
/question mark [cmd1]  
/documentary: [cmd1]  
/product: [cmd1]  
/isometric: [cmd1]
```

A full-body image of Batman in his tactical suit, standing against a dark background. The suit is highly detailed with various armor pieces and a cape. The lighting is dramatic, highlighting the contours of the suit.

**USE  
WITH  
DALL-E**

**PROMPT GENERATORS  
DALLE**





## **DALLE GENERATOR**

I need you to become the ultimate prompt generating machine. Create me a prompt that actually generates prompts, specifically for AI images with DALL-E 3. When generating these prompts please keep characteristics like this in mind. The characteristics will include 4K, 8K, 64K, 3D Rendering, photorealistic, photography realistic, hyperrealistic, detailed, highly detailed, high resolution, hyper-detailed, HDR, UHD, realistic rendering, etc. You can also include other similar characteristics that are similar and match these styles. Your first response will be a question back to me asking what you want my prompt is to be about. Do you understand?

USE THESE IN CHATGPT/DALLE

"ACT AS A DIGITAL LOGO CURATOR WITH EXPERTISE IN AI-GENERATED IMAGES. CREATE INNOVATIVE AND INTRIGUING PROMPTS TAILORED FOR THE AI IMAGE-GENERATING TOOL DALL-E 3. EACH PROMPT SHOULD INSPIRE UNIQUE, VISUALLY STRIKING LOGOS AND WORDS THAT PUSH THE BOUNDARIES OF MACHINE CREATIVITY. BELOW I WILL PROVIDE YOU WITH THREE COMMANDS: ""WORDS"", ""SUBJECT"", AND ""STYLE"". ""WORDS"" IS THE WORD THAT I WANT YOU TO GENERATE THAT WILL BE PLACED BELOW THE SUBJECT. ""SUBJECT"" IS THE ITEM OR SUBJECT I WANT YOU TO CREATE. ""STYLE"" WILL BE THE STYLE AND CHARACTERISTICS OF THE IMAGE, FOR EXAMPLE ""NEON"" OR ""PHOTOREALISTIC""

WORDS:  
SUBJECT:  
STYLE: "

# DALLE GENERATOR





A full-page background image showing the silhouette of a diver underwater. The diver is positioned in the center, facing away from the viewer and slightly to the left. They are wearing a diving mask and a scuba tank. Bubbles are visible around the diver's head and body. The water is a deep blue, and a bright light source from the upper right creates a strong backlighting effect, illuminating the diver's silhouette and creating a hazy, ethereal atmosphere. The light rays penetrate the water, creating a sense of depth and movement.

PROMPT GENERATORS

# LEONARDO AI

Prompt generators to use with  
Leonardo AI

Can also be  
INTERCHANGEABLE



# PROMPT GENERATOR

CINEMATIC, PHOTOREALISTIC LEONARDO AI

I need you to become the ultimate prompt generating machine. Create me a prompt that actually generates prompts, specifically for AI images that will be generated for a Stable Diffusion app like DALL-E. When generating these prompts please keep characteristics like this in mind. The characteristics will include 4K, 8K, 64K, cinematic, extreme closeup shot, photorealistic, photography realistic, hyperrealistic, detailed, highly detailed, high resolution, hyper-detailed, HDR, UHD, professional photography, dynamic, documentary style. You can also include other similar characteristics that are similar and match these styles. Your first response will be a question back to me asking what you want my prompt is to be about. Do you understand?





Embark on an awe-inspiring journey into the heart of the African savannah with a breathtaking photorealistic render of a majestic lion. The camera captures the scene in a medium shot, using the Canon EOS R5 equipped with the EF 70mm lens, ensuring every aspect of this stunning creature is faithfully portrayed. The high-resolution detail of 8K resolution brings the lion's golden fur to life, while the HDR lighting showcases the play of sunlight and shadows on its magnificent mane and muscular body. The Unreal Engine 5 provides an unparalleled level of realism, making every whisker and claw incredibly lifelike. The lion stands confidently amidst the grassy plains, its amber eyes reflecting the untamed spirit of the wild. The background features an expansive panoramic view of the savannah, immersing the viewer in the untamed beauty of this natural habitat. This photorealistic masterpiece is sure to captivate with its artistic prowess and evoke a sense of admiration for the regal king of the savannah.





Scene from Wolf of Wall street (2013) directed by Martin Scorsese. The shot opens with a zoomed-out view of a picturesque scene, capturing the busy and hectic world of Leonardo Dicaprio in a Wall Street business setting. The UHD camera captures every detail of this moment, highlighting the colors and textures. With Scorsese's expert direction, this scene exudes drama and invites the audience to immerse themselves in Leonardo's world. Generate a cinematic and highly detailed AI image of a modern man in a Wall Street setting. Render him in a photorealistic style, capturing the fine details of his features, clothing, and surroundings. The man should exude confidence and style, with a contemporary fashion sense suitable for a business setting. Pay close attention to realistic skin tones, textures, and lighting conditions. Ensure the image is in high resolution, such as 8K, to showcase the intricate details and allow





A Cinematic Scene from Drama TV show, "Mad Men", Close-up shot, A charismatic Jon Hamm in an office dressed sharply and impeccable in a black Armani business suite, tailored perfectly to fit his body, captured by UHD Canon EOS R6 Mark II camera, complemented by the Sigma 50mm f/1.4 DG HSM Art Lens, ensuring every detail, Inspiring, Natural light --ar 21:9 --style raw, octane render, unreal engine, niji

# CHAPTER

# NUMBER 3

**PHOTO STYLE KEYWORDS**

ALL  
APPS

LET'S  
DO IT

Use these tips and keyword variations throughout your image generating processes for unique characteristics.

NOTE: You don't need to add the parameters in other apps, i.e. --ar 16:9



A portrait of a blonde woman with long, wavy hair, lying down on a dark surface. She is looking directly at the camera with a neutral expression. Her head is positioned towards the right side of the frame, and her arms are extended outwards. The background is a dense, chaotic arrangement of various objects and tools, including a hammer, saw, wrench, screwdriver, pliers, and many other small items, all arranged around her head and torso. The objects are scattered across the dark surface, creating a collage-like effect. The lighting is soft, highlighting the woman's features and the textures of the objects around her. The overall composition is a blend of portraiture and still life, with the woman's face as the central focus amidst a sea of everyday items.



# Doppler Effect

---



Prompt: Doppler effect's vertical journey,  
Amidst shadows, glow pulses, hot electric  
expanse



FUTURISTIC



**GLOWING PASTEL PURPLE  
PHOSPHORESCENCE EYEBALL,  
SIMPLE SILHOUETTE, BLACK  
BACKGROUND**

# Fortnite Style

"BLONDE WOMAN PORTRAIT, FORTNITE BACKGROUND --AR 16:9







# **Marker Drawing**

**BLONDE WOMAN PORTRAIT, MARKER DRAWING**

# Liquid Nitrogen

LIQUID NITROGEN \*BLACK\* BACKGROUND





# Photoluminescence

PHOTOLUMINESCENCE BACKGROUND --V 5.1



# GTA 5

BLONDE WOMAN PORTRAIT, GTA V --AR 16:9







**CINEMATIC**

**BLONDE WOMAN PORTRAIT, CINEMATIC**



# SYNTH WAVE

**BLONDE WOMAN PORTRAIT, SYNTHWAVE --AR 16:9**





# **GLOW IN THE DARK**

**GLOW IN THE DARK COLOR BURST, \*BLACK BACKGROUND\* --V 5.1**

# Wide split-screen



Wide split-screen photo of a [Your object] on the left panel and the same aged, worn and damaged [Your object] on the right panel, ultra-realistic, depicting a clear contrast between the two states



# Cinematic Still

## Pikachu

### Hall of Mirrors



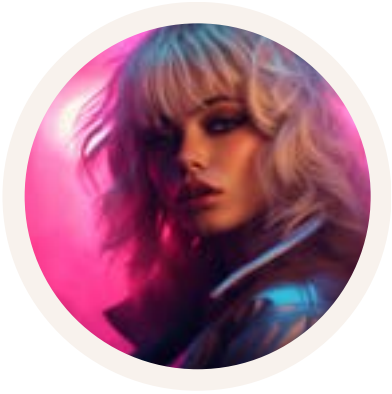
Cinematic Still of a [Pikachu], hall of mirrors, shards, vibrant colors, Mirror Hall, reflections and mirroring, photorealistic

# *Styles* FOR DIFFERENT LOOKS



## **GTA V**

blonde woman portrait, GTA V --ar 16:9



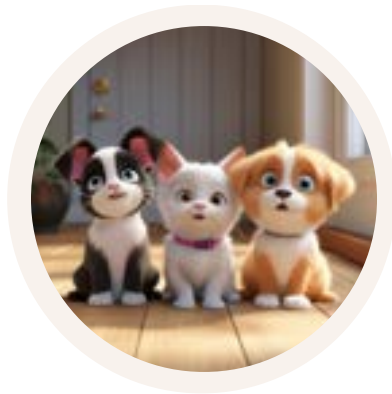
## **SYNTHWAVE**

blonde woman portrait, Synthwave --ar 16:9



## **CYBERPUNK**

blond woman portrait, Cyberpunk



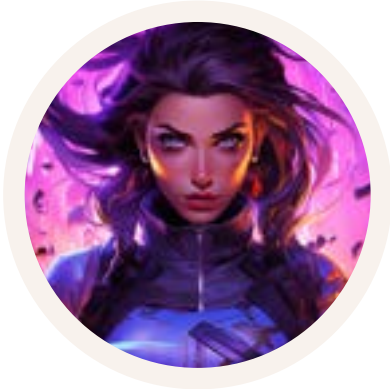
## **PIXAR**

[subject] portrait, pixar --ar 16:9



# *Continued*

# FOR DIFFERENT LOOKS



## **FORNITE**

woman portrait, Fortnite background --ar 16:9



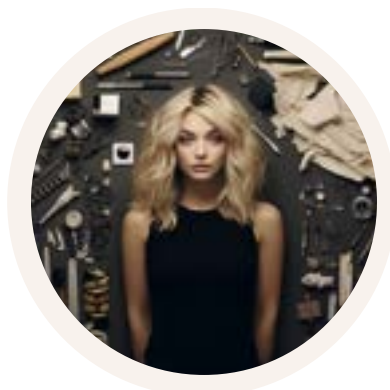
## **CINEMATIC**

blonde woman portrait, Cinematic --ar 16:9



## **STICKER**

cute baby panda, portrait, sticker --ar 16:9



## **KNOLLING**

blonde woman portrait, Knolling --ar 16:9



PHOTO STYLE KEYWORDS

# MORE

Adding these simple keywords will completely transform your images. These are also highly recommended.

## BLUE PEN DRAWING

blonde woman portrait, Blue Pen drawing --ar 16:9

## INFOGRAPHIC

breathtaking landscape, Infographic --ar 16:9

## SCREENPRINT

blonde woman portrait, Screenprint --ar 16:9

## MARKER DRAWING

blonde woman portrait, Marker drawing --ar 16:9

## WOODCARVING

breathtaking landscape, Wood carving --ar 16:9

## FOUND FOOTAGE

blonde woman portrait, Found Footage --ar 16:9

## LEGO

blonde woman portrait, LEGO --ar 16:9

## PAPER CUTOUT

blonde woman portrait, Paper cutout --ar 16:9

## SHONEN ANIME

blonde woman portrait, Shonen Anime --ar 16:9

## IVORY CARVING

breathtaking landscape, Ivory carving --ar 16:9

FIND EVEN MORE IN THIS COMPLIMENTARY  
DATABASE



# CHAPTER



# NUMBER 4

**ANIMATED STYLES**

ALL  
APPS

LET'S  
DO IT

*What you will learn*

Create PIXAR, Dreamworks and other animated-style images with these prompts. Some work better in other apps. For example, one may work better in Midjourney than it does in Leonardo AI (and vice versa). Try Midjourney, Leonardo AI, DALL-E and Adobe Firefly (if you have access to any of those).

A close-up, low-angle shot of Mario from the Super Mario Bros. franchise. He is wearing his iconic red cap with a white 'M' and a red 'M' on it. He has a large, friendly smile, showing his teeth. He is wearing a red shirt with white gloves. He is standing in a field of tall, golden grass. In the background, there is a stone wall and some green foliage. The lighting is warm and golden, suggesting a sunset or sunrise. The overall style is highly detailed and polished, characteristic of modern 3D animation.

# ANIMATION STYLES

INCLUDES  
PIXAR, DREAMWORKS



### Preps 01



Mario, realistic rendering,  
unreal engine 5 --niji --ar  
16:9

### Preps 02



Mario, realistic rendering,  
unreal engine 5 --niji --ar  
16:9

### Preps 03



Your main content goes here.  
Feel free to use long paragraphs,  
or break them up into shorter  
ones with subheadings.

### Preps 04



Your main content goes here.  
Feel free to use long paragraphs,  
or break them up into shorter  
ones with subheadings.



**OVERSIZED PLUSH TOY, PIKACHU, CELL SHADED ANIME STYLE,  
PRODUCT DISPLAY, BLURRY STORE BACKGROUND --AR 16:9**





# *Characters*

## ANIMATED STYLES



### SONIC THE HEDGEHOG

Sonic the hedgehog, realistic rendering, unreal engine 5  
--ar 16:9 --style 3T0cfX06 --v 5.2



### TROLLS

Poppy character from movie "Trolls", in the style of DreamWorks animation, digitally enhanced, finely rendered textures, ps1 graphics, bold coloration, dracopunk, Arthur Sarnoff, David Renshaw, Sōsaku Hang



### SHREK

Shrek, in the style of DreamWorks animation, digitally enhanced, finely rendered textures, ps1 graphics, bold coloration, dracopunk, Arthur Sarnoff, David Renshaw, Sōsaku Hang --ar 3:2 --style raw



### MADAGASCAR

Lion from the movie Madagascar, in the style of DreamWorks animation, digitally enhanced, finely rendered textures, ps1 graphics, bold coloration, dracopunk, Arthur Sarnoff, David Renshaw, Sōsaku Hang --ar 16:9 --style raw-4eZZ6QwQ --v 5.2





# Dreamworks

## Pikachu

Pikachu realistic rendering,  
unreal engine 5 --niji --ar  
16:9



## Red Panda

3D, cute little {Red Panda},  
fantasy background --s 750  
--ar 16:9







## CLAY PIKACHU

Adorable 3d clay kawaii baby Pikachu muted pastels, Blender 3d, matte background with subtle gradients

## BRUSHED ALUMINUM

3D rendered dog mask made of brushed aluminum, green blue color palette, white background -s 250



## TRANSPARENT SPHERES

Four transparent spheres arranged in a square, each containing a different 3D realistic element related to [Your theme/ object/ environment]. Realistic textures and colors. The spheres are set against a white background to enhance their visibility.



# PIXAR

[SUBJECT], PIXAR STYLE, CAT, WHITE BACKGROUND





# PIXAR

ADORABLE 3D CLAY KAWAII BABY PIXAR CAT  
MUTED PASTELS, BLENDER 3D, MATTE  
BACKGROUND WITH SUBTLE GRADIENTS



**PIXAR**



# AVATAR

3D REALISTIC CARTOON AVATAR, [FRONT VIEW], [25 YEAR OLD WOMAN], [BROWN HAIR, MODERN, [HAZEL EYES], [MODERN CLOTHING], WHITE BACKGROUND



# AVATAR

3D REALISTIC CARTOON AVATAR, [FRONT VIEW], [25 YEAR OLD FITNESS MODEL WOMAN], [BLONDE HAIR, MODERN, [BLUE EYES], [FITNESS CLOTHING], WHITE BACKGROUND





# AVATAR

3D REALISTIC CARTOON AVATAR, [FRONT VIEW], [ELSA FROM THE MOVIE FROZEN], [WHITE HAIR, MODERN, [BRIGHT BLUE EYES], [MODERN CLOTHING], WHITE BACKGROUND



# REALISTIC

REALISTIC AND FUN IMAGE OF A [KOALA] WITH A JOYFUL EXPRESSION, [RIDING A RED MOTOCROSS BIKE IN MID-AIR OVER A DIRT TRACK. THE KOALA SHOULD BE WEARING A SMALL HELMET, AND HOLDING A CAN WITH A SPLASH OF LIQUID FLYING OUT DUE TO THE HIGH SPEED]. THE BACKGROUND SHOULD BE A REALISTIC A CLEAR BLUE SKY, GIVING THE SCENE A LIVELY, ENERGETIC ATMOSPHERE.





MORE

# ANIMATED



## 3D-RENDER

BARBIE

Create a visually stunning 3D render of Barbie



**3D RENDER**



# 3D Render

A vibrant, cartoon-style rendering of a Pikachu perched atop a rocky mountain peak, surrounded by a lush forest.





## **CUTE TINY WHITE ELEPHANT**

Cute tiny white elephant, chibi, adorable and fluffy, logo design, cartoon, cinematic lighting effect, charming, 3D vector art, cute and quirky, fantasy art, bokeh, hand-drawn, digital painting, soft lighting, isometric style, 4K resolution, photorealistic rendering, highly detailed clean, vector image, photorealistic masterpiece, professional photography, simple space backdrop, flat white background, isometric, vibrant vector





The tennis player tries to control the burning tennis ball, but to no avail, The court is in a desert resembling Mars, The weather is amazingly stormy, d, superb cinematic color grading, key visual, HDR, film still, --ar 16:9

# DREAMWORKS



POPPY CHARACTER FROM MOVIE "TROLLS", IN  
THE STYLE OF DREAMWORKS ANIMATION,  
DIGITALLY ENHANCED, FINELY RENDERED  
TEXTURES, PS1 GRAPHICS, BOLD COLORATION,  
DRACOPUNK, ARTHUR SARNOFF, DAVID  
RENSHAW, SŌSAKU HANG





# MARIO

**SUPER MARIO IN A DUNGEON, SPARKS IN THE  
BACKGROUND, HARD LIGHT, REALISTIC  
RENDERING, UNREAL ENGINE 5 --NIJI --AR 16:9**

**REALISTIC RENDERING**





# ANIME-STYLE

CREATE AN ANIME-STYLE POSTER USING THE NIJI MODEL. THE CHARACTER IS A YOUNG, FIERY HERO WITH SPIKY, EXPLOSIVE HAIR AND FIERCE, DETERMINED EYES. HE IS WEARING A FUTURISTIC SUIT OF ARMOR AND STRIKING A DYNAMIC, AGGRESSIVE POSE. HIS EXPRESSION IS INTENSE, AS IF HE'S SHOUTING A BATTLE CRY. THE BACKGROUND IS A CITYSCAPE IN THE MIDST OF AN EPIC BATTLE, WITH EXPLOSIONS LIGHTING UP THE SKY. THE OVERALL STYLE OF THE POSTER IS REMINISCENT OF SHONEN ANIME, WITH BOLD LINES, DRAMATIC LIGHTING, AND A SENSE OF HIGH-STAKES ACTION.



# CINEMATIC

CINEMATIC PRODUCTION STILL CINEMA FILM SHOT SCIFI BY DENIS VILLENEUVE,  
MINIMALIST COMPOSITIONS, MUTED COLOR --AR 3:2 --STYLE RAW --V 5.2





# AUDI CAR

CREATE AN EXHILARATING 8K RESOLUTION PHOTO THAT CAPTURES THE ESSENCE OF SPEED AND EXCITEMENT, MASTERPIECE, AUDI TT, STREET, GAZING INTO DISTANCE, CITY, PHOTO, SPEED, DARK, DYNAMIC ACTION, VIGNETTING, LIGHT LEAKS, PERFECT COMPOSITION, BLUE, HYPERREALISTIC, VOLUMETRIC LIGHTING, CINEMATIC, PHOTOREALISTIC



# POV SHOT

POINT-OF-VIEW SHOT, WALKING THROUGH A BUSTLING TOKYO STREET, AT NIGHT, VIBRANT WITH CAMERA FLASHES AND THE BUZZING CROWD, THE LENS SPLASHED WITH RAINDROPS AS IF SHOT ON KODAK EKTAR 100 --STYLE RAW --AR 21:9







# NIJI

ANIME, DUTCH ANGLE, POV, HOURGLASS BODY, FEMALE WARRIOR WITH A SCYTHE ILLUSTRATED BY LEE BERMEJO AND JEFFREY SCOTT CAMPBELL, DYNAMIC MOTION, CHINESE-INSPIRED METAPHYSICS, VERY BEAUTIFUL HALF DEVIL GIRL HOLDING A SCYTHE, INTRICATE HIGHLY DETAILED, DIGITAL PAINTING, ARTSTATION, CONCEPT ART, SHARP FOCUS, HDR 4K, 8K, PHOTOREALISM, MARVEL COLOR, HIGH DETAL REALISTIC, 8K, --S 1000 --AR 3:4 --NIJI



"Create a heartwarming and highly detailed AI image of a playful puppy. Render the puppy in a photorealistic style, capturing its cute features, expressive eyes, and fluffy fur with meticulous detail. Emphasize the puppy's youthful energy and curiosity through dynamic posing or interactions with its environment. The image should evoke a sense of warmth and joy, showcasing the puppy's lovable nature. Ensure the image is in high resolution, such as 4K, to bring out the finest details of the puppy's fur and facial expressions. Utilize advanced rendering techniques to create realistic lighting and shadows, enhancing the overall realism of the image. Consider incorporating elements like a soft, inviting background or playful props to further enhance the composition and add depth to the scene.



# ICONS

and a few bonus images



3d vector set of Birthday icons., in the style of atey ghailan, mixes realistic and fantastical elements, candycore, realistic and hyper-detailed renderings, low poly, soft, muted color palette, isolate on white

3d vector set of Christmas icons., in the style of atey ghailan, mixes realistic and fantastical elements, candycore, realistic and hyper-detailed renderings, low poly, soft, muted color palette, isolate on white



# ICONS

and a few bonus images



3d vector set of Halloween icons., in the style of atey ghailan, mixes realistic and fantastical elements, candycore, realistic and hyper-detailed renderings, low poly, soft, muted color palette, isolate on white

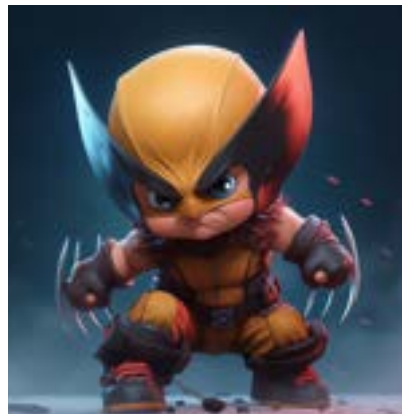
4 png images, vector illustration pack, knolling style, no border, png white background, technology, in the style of animated illustrations, futuristic atmospher, full body -- style raw --ar 16:9 -





# ADORABLE BABY CHIBI

REPLACE [SUBJECT] WITH ANYTHING  
YOU WANT



A CUTE ADORABLE BABY CHIBI [SUBJECT] ON THE  
STYLE OF ARTGEM, HIGHLY DETAILED, ULTRA DETAILED,  
INTENSE COLORS, DAZZLING, OCTANE RENDER, UNREAL  
ENGINE, 8K, 3D RENDER, REALISTIC --NIJI 5 --AR 16:9

## Colorful AI Genius



Bursts of color

**A COLORFUL AI GENIUS IS  
CREATING MAGIC, CAUSING  
BURSTS OF COLORS  
SURROUNDING A NOTEPAD, 8K  
RESOLUTION, REALISM, HYPER  
DETAILED, BEST QUALITY, SHARP  
FOCUS, SUPERB CINEMATIC  
COLOR GRADING, KEY VISUAL,  
HDR, FILM STILL**



# CHAPTER



# NUMBER 5

**FUTURISTIC STYLES**

ALL  
APPS

LET'S  
DO IT

*What you will learn*

Create futuristic, neon, glowing, photorealistic images. Replace any keywords with your own.



LOOK INTO THE FUTURE

THE  
**FUTURISTIC  
LOOK**





# CYBORG WALLPAPER

CYBORG WALLPAPER 2K1, IN THE STYLE OF FUTURISTIC  
SCENARIOS, MAXIMALIST, 32K UHD, MODERN URBAN,  
HYPER-REALISTIC, ANGURA KEI, --S 1000





RY

# THE MATRIX

MATRIX DOT DRAWING, CYBORG,  
COMPUTER-GENERATED AESTHETICS





# Cyberpunk

PROJECTION

AN IMAGE FEATURING A GIRL IN A SLEEK CYBERPUNK-STYLE  
PROJECTION OF AN URBAN SKYLINE, GLOWING IN BOLD  
HUES OF PURPLE, GREEN, AND ORANGE, ACCENTUATING  
SKYSCRAPERS AND BUSTLING STREETS, SET AGAINST A  
VOID BACKDROP --AR 7:4 -



# TRASHMETAL PUNK

*Neon  
Realism*

COLORFUL EDGY BP OF GUITAR | TRASHMETALPUNK DESIGN |  
3D DATA PARTICLES | 8K RESOLUTION | GREEN AND PINK |  
INNOVATIVE NEON REALISM DESIGN | IN THE MIDDLE OF THE  
CITY --STYLE RAW --AR 16:9

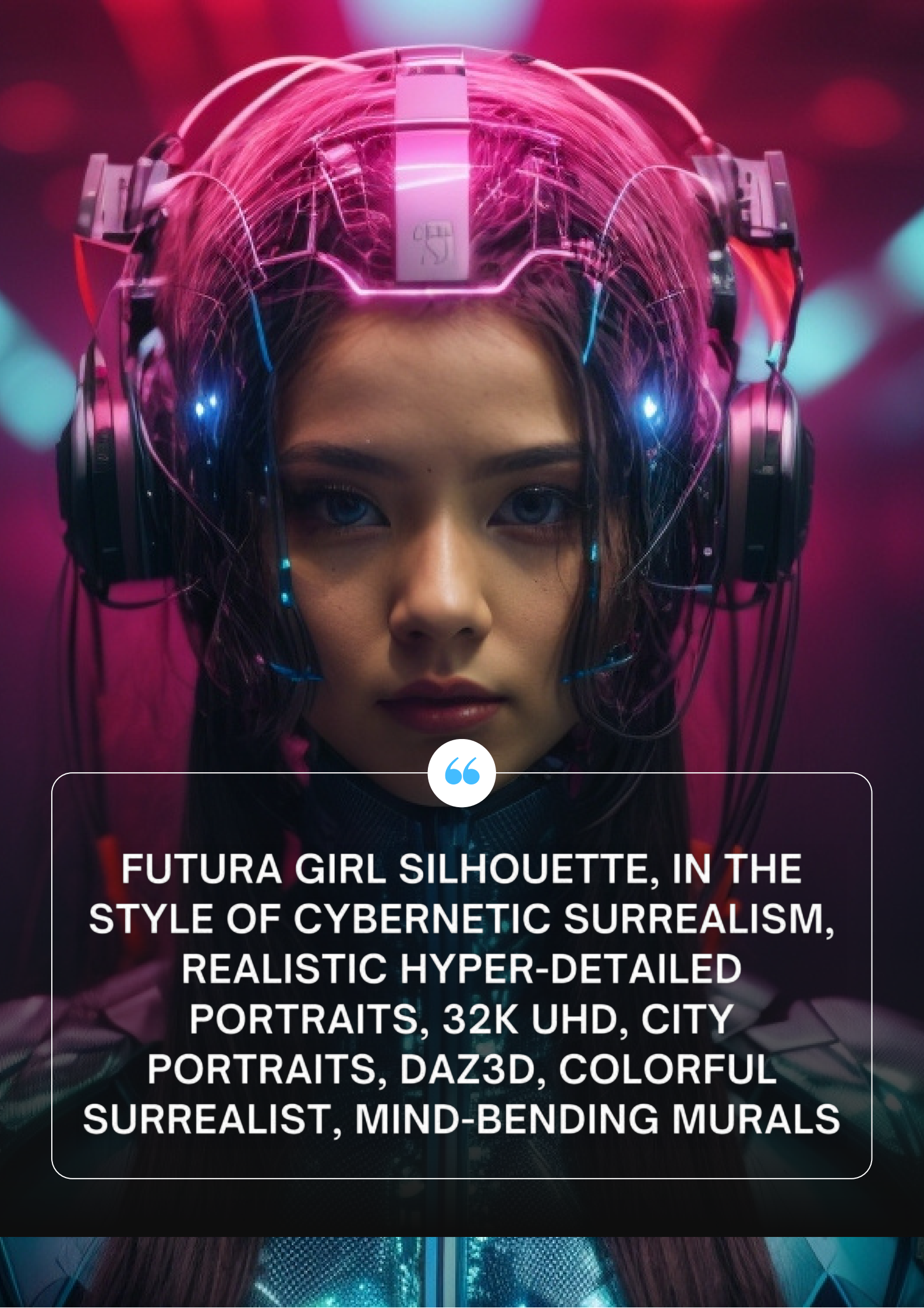


FUTURISTIC

# THE ANDROID WARRIOR



IMAGE OF THE INFORMATION PANEL FOR AN FEMALE VIKING ANDROID WARRIOR  
CHARACTER, IN THE STYLE OF FUTURISTIC DIGITAL ART, DARK BLUE AND  
SILVER, INSTALLATION CREATOR, HIERATIC VISIONARY, LITH PRINTING,  
CALCULATED, CABINCORE --S 750 --V 5.1



“

**FUTURA GIRL SILHOUETTE, IN THE  
STYLE OF CYBERNETIC SURREALISM,  
REALISTIC HYPER-DETAILED  
PORTRAITS, 32K UHD, CITY  
PORTRAITS, DAZ3D, COLORFUL  
SURREALIST, MIND-BENDING MURALS**





**TWO VERSIONS OF A GIRL STANDING NEXT TO EACH OTHER, CYBERPUNK ART, DIGITAL ART, 2D/3D  
MASHUP POSTER DESIGN, CINEMATIC COLORS LIGHTING, VIBRANT MOVIE POSTER**







**"CREATE A PHOTO-REALISTIC IMAGE OF THE SUPERHERO CHARACTER 'AETHERIA, THE LUMINAL GUARDIAN.' CAPTURE HER STANDING IN A REGAL YET DYNAMIC POSE, WITH ONE ARM RAISED AND THE OTHER EXTENDING OUT AS IF CHANNELING COSMIC ENERGY. HER SEMI-TRANSPARENT SKIN SHOULD REVEAL INTRICATE CONSTELLATION-LIKE PATTERNS UNDERNEATH. THE HOLOGRAPHIC PANELS ON HER SUIT SHOULD REFLECT THE UNIVERSE'S APPEARANCE, AND HER HAIR SHOULD FLOW LIKE SHIMMERING STARDUST. SURROUND HER WITH A CELESTIAL BACKDROP THAT EMPHASIZES HER CONNECTION TO THE COSMOS. THE CLOAK SHE WEARS SHOULD BILLOW LIKE A NEBULA, EMITTING A SOFT, RADIANT GLOW THAT INTERACTS REALISTICALLY WITH THE LIGHTING."**







**A SCIENTIST STANDING BESIDE A HOLOGRAPHIC HEART  
ON THE TABLE, ULTRA TRANSLUCENT 3D RENDERING,  
INTRICATE DETAILS, DR. OFFICE ATMOSPHERE --S 250**

# CYBERPUNK BOT

HYPER-REALISTIC IMAGE OF A ROBOT WEARING A CYBERPUNK SAMURAI HELMET WITH A LIGHT SHINOBI MASK, IN A POSITION THAT REFLECTS BEING A DIVINITY IN CYBERSPACE. THE LIGHTING SHOULD BE INTENSE, WITH NEON COLORS AND BURSTS OF LIGHT THAT ENHANCE THE FIGURE OF THE ROBOT. THE COMPOSITION OF THE IMAGE SHOULD BE TAKEN FROM A LOW ANGLE, USING A SONY A7R IV CAMERA AND A SONY FE 24-70MM F/2.8 GM LENS, EMPHASIZING THE MAGNIFICENCE OF THE ROBOT AND ITS VIRTUAL ENVIRONMENT







**AN ILLUSTRATION OF A FANTASY VIDEO GAME WITH MANY CHARACTERS, IN THE STYLE OF VIBRANT COLOR GRADIENTS, DETAILED MINIATURES, PLUSH DOLL ART, ENCHANTING LIGHTING, BONE, BROODING MOOD**



**PHOTO PORTRAIT OF A BEAUTIFUL FEMALE ROCKPUNK ,STUNNING EYES ,FUTURISTIC CYBERPUNK ,  
WAR PAINT ,FIRE,FLAMES AND SMOKE BACKGROUND , EXTREMELY DETAILED AND INTRICATE,  
CENTER COMPOSITION, ELEGANT, , EXTREME CONTRAST, SHARP FOCUS --S 1000 --AR 16:9**







ENVISION A FUTURISTIC CITY AT NIGHT, BROUGHT TO LIFE WITH THE HYPER-REALISM OF A CANON EOS R6 MARK II AND THE WIDE VIEW OF A 35MM LENS. BEGIN WITH AN ELEVATED LONG SHOT TO CAPTURE THE VAST CITYSCAPE. TALL SPIRES OF IRIDESCENT SKYSCRAPERS PIERCE THE NIGHT SKY, THEIR SURFACES SHIMMERING WITH HIGH-RESOLUTION HOLOGRAPHIC ADVERTISEMENTS. ADVANCED HOVER VEHICLES WEAVE THROUGH THE NETWORK OF AIRBORNE LANES, LEAVING STREAKS OF NEON LIGHT IN THEIR PATH. THE STREETS BELOW BUZZ WITH LIFE, THE MOVEMENT OF HUMANOID FIGURES HIGHLIGHTED UNDER THE COOL, ELECTRIFIED GLOW OF STREET LAMPS. THE CITY IS FRAMED BY THE STAR-LIT HORIZON ON ONE SIDE, AND A GLEAMING MOON ON THE OTHER. RENDER THIS IMAGE WITH THE DETAIL OF AN 8K RESOLUTION, LENDING A PHOTO-REALISTIC FINISH."

# CHAPTER



# NUMBER 6

**ARTIST STYLES**

ALL  
APPS

LET'S  
DO IT

*What you will learn*

When you add a specific artist's or photographer's name in your prompt, you'll get some awesome and unique images.



# ARTISTIC





PORTRAIT PHOTO BY PAUL  
NICKLEN --AR 16:9 --STYLE RAW





PORTRAIT PHOTO BY STEVEN MEISEL --  
AR 16:9 --STYLE RAW



**BEAUTIFUL YOUNG WOMAN, PORTRAIT PHOTO BY PETER LIK**



**PORTRAIT PHOTO BY ANDREAS LEVERS --AR 16:9 --STYLE RAW**



**BEAUTIFUL WOMAN PHOTO BY MIKHAEL SUBOTZKY**







**PORTRAIT PHOTO BY SCARLETT HOOFT GRAAFLAND --AR 16:9 --STYLE RAW**

## ARTISTS



### **ARTIST: TINA BARNEY**

portrait photo by Tina Barney,  
modern man wearing a black  
armani suit --ar 16:9 --style raw





**YOUNG WOMAN PORTRAIT PHOTO BY SEBASTIÃO SALGADO**



**YOUNG WOMAN PORTRAIT PHOTO BY ANDRES SERRANO**

# CHAPTER



# NUMBER 7

**LIGHTING KEYWORDS**

ALL  
APPS

LET'S  
DO IT

*What you will learn*

Create unique looking images based off  
of lighting descriptions





# **SPECIAL LIGHTING**

**PORTRAIT OF A WOMAN, BLUE HOUR, PHOTO --V 5.1**



# **ELECTROLUMINESCENT FLOWER**

**FLOWER, ELECTROLUMINESCENT WIRE, PHOTO --V 5.1**





# **RADIOACTIVITY GLOWING**

**PORTRAIT OF A WOMAN, GLOWING RADIOACTIVITY, PHOTO --V 5.1**



# **X-RAY LIGHTING**

**PORTRAIT OF A WOMAN, X RAY LIGHT, \*COLOR\* PHOTO --V 5.1**





# **ELECTROLUMINESCENT FLOWER**

**FLOWER, ELECTROLUMINESCENT WIRE, PHOTO --V 5.1**



**CLOSE UP WOMAN INVISIBLE INFRARED LIGHT RENDER, VIVID COLORS,  
DISTINCTIVE RED VEGETATION IN THE PARK**





ABANDONED [LOCATION], FOGGY DAWN CREEPY, RUSTED [OBJECT], SOFT DAWN LIGHT,  
MISTY, HAUNTING, SHOT ON KODAK PORTRA, PASTEL GOTHIC, EERIE STILLNESS --C 5 --W 80 -  
-S 250 --AR 21:9 --V 5.2





**PORTRAIT OF A YOUNG ATTRACTIVE WOMAN, GOLDEN HOUR, PHOTO --STYLE RAW**



**PORTRAIT OF A WOMAN, BLUE HOUR, PHOTO --V 5.1**



# CHAPTER



# NUMBER 8

**COLOR PALETTE STYLES**

ALL  
APPS

LET'S  
DO IT

*What you will learn*

Add a color palette to your image for unique color scheme-style designs.





# COLOR PALETTE

**INTERIOR DESIGN : COLOR PALETTE MAGENTA,  
BLACK, WHITE, PHOTOGRAPHY :1**



# COLOR PALETTE

**WOMAN PORTRAIT, COLOR PALETTE ELECTRIC BLUE,  
SILVER, BLACK, PHOTOGRAPHY**





# **COLOR PALETTE**

**WOMAN PORTRAIT, COLOR PALETTE CARDINAL RED,  
CHARCOAL, PLATINUM PHOTOGRAPHY**



# COLOR PALETTE

**WOMAN PORTRAIT :: COLOR PALETTE RED THEME,  
PHOTOGRAPHY --NO PALETTE --V 5.1**





# COLOR PALETTE

**INTERIOR DESIGN :: COLOR PALETTE BLACK THEME,  
PHOTOGRAPHY --NO PALETTE --V 5.1**

**WOMAN :: COLOR PALETTE ELECTRIC BLUE, SILVER, BLACK,  
PHOTOGRAPHY --NO PALETTE, PANELS --V 5.1**





ALSO AVAILABLE

# THE PROMPTS THAT KEEP GIVING



2000+ PROMPTS, UPDATED DAILY

## MEGA PROMPTS DATABASE

[GET THE PROMPTS HERE](#)

I HOPE YOU ENJOYED THESE PROMPTS --  
MORE COMING SOON...

*-METRICSMULE.COM*

# THE END

## PHOTOREALISTIC

SUBSCRIBE ON YOUTUBE

@METRICSMULE

MORE PROMPTS

METRICSMULE.COM/BLOG